



## Next Generation Data Management Tools in the New OpenSpirit Desktop



OpenSpirit Technical  
Symposium – Barcelona 2010

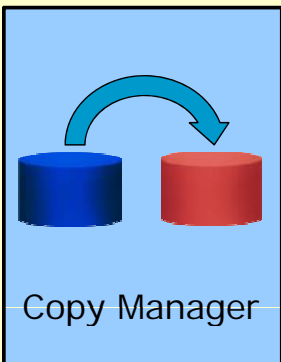


# OpenSpirit Tools

right  
from the start



## Desktop Applications



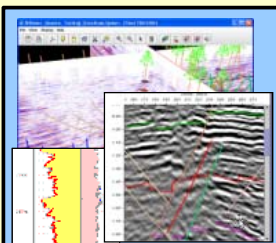
Copy Manager



Excel Adapter



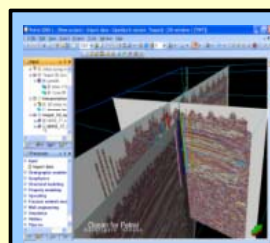
LoadIT WITSML



Data Selector  
Desktop Viewers

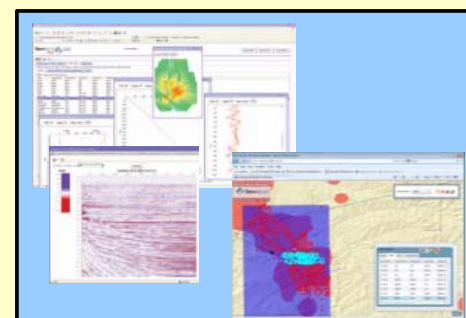


Scan Utility  
ArcGIS Extension  
Google Earth  
ArcGIS Explorer  
ArcGIS Server



OPAA  
(Petrel plug in)  
*Plus adapters  
from other ISVs*

## Web Applications



Data Selector  
Web Viewers  
ArcGIS Server Integration

**This  
talk**

Data  
Management



GIS  
Integration

Application  
Integration



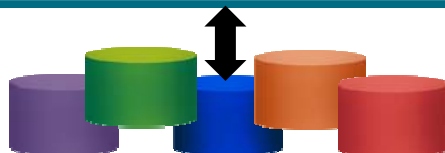
Web  
Integration



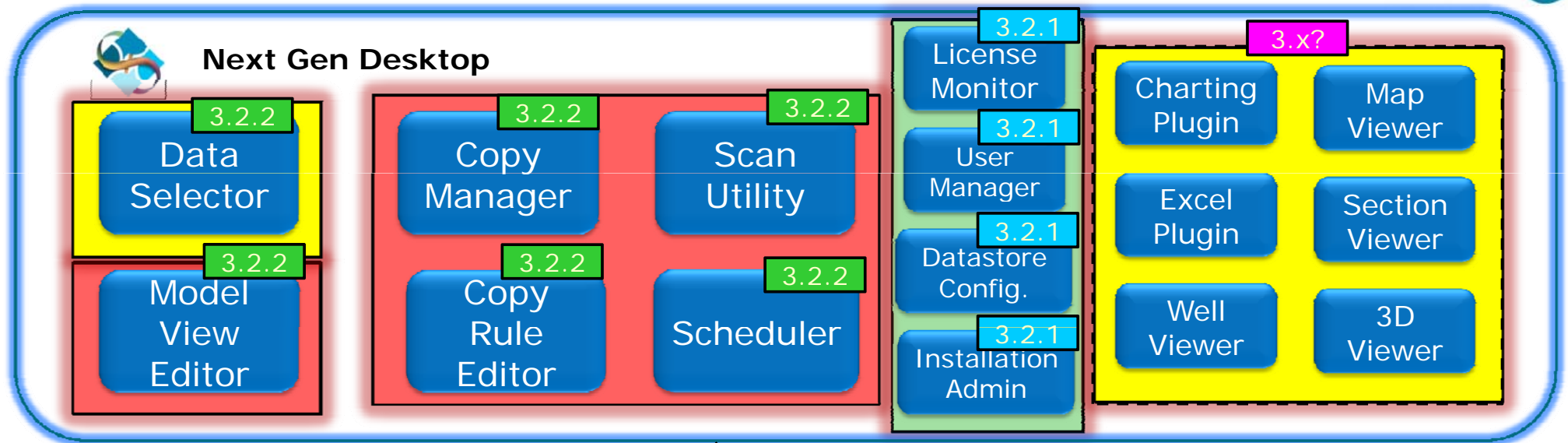
OpenSpirit

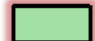


Integration Framework

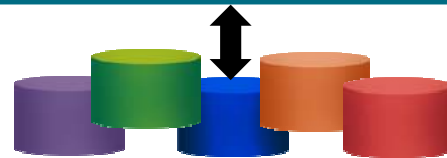
Corporate and Project  
Data Stores



# Next Gen Desktop



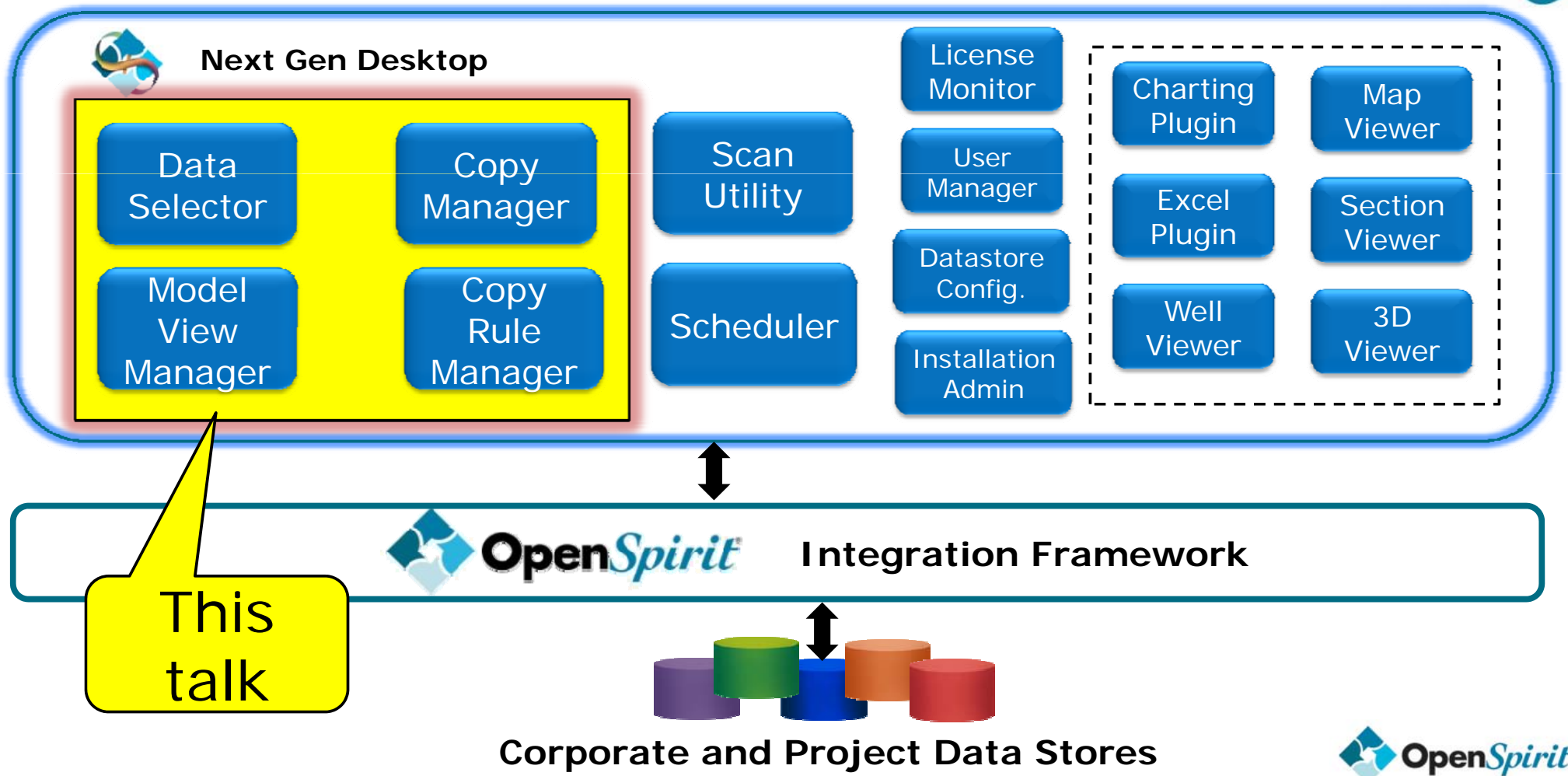
-  Administrator Tools
-  Data Browser Tools
-  Data Manager Tools



Corporate and Project Data Stores



# Next Gen Desktop



# Live Demo

**right**  
from the **start**



 **OpenSpirit**

# Summary

---



- **Data Selector**
  - Universal table view of data – simple and complex
  - OpenSpirit Common Model or Native Model
  - Comprehensive filtering options
  - Customizable via **Model View Manager**
- **Copy Manager**
  - Universal data transfer tool
  - Uses embedded data selector for selection of data
  - Customizable via **Copy Rule Manager**
  - Integrated scheduler
  - Access to Copy Manager controlled by User rights manager



Suri Bhat

[suri.bhat@openspirit.com](mailto:suri.bhat@openspirit.com)

+1 281 295 1400

Clay Harter

[clay.harter@openspirit.com](mailto:clay.harter@openspirit.com)

+1 281 295 1400



OpenSpirit **right**  
from the **start**