



Next Generation GIS Integration with OpenSpirit



OpenSpirit Technical
Symposium – Barcelona 2010

OpenSpirit **right**
from the **start**

OpenSpirit Tools

right
from the start



Desktop Applications

Copy Manager

Excel Adapter

LoadIT WITSML

Data Selector
Desktop Viewers

Scan Utility
ArcGIS Extension
Google Earth
ArcGIS Explorer
ArcGIS Server

OPAA
(Petrel plug in)
Plus adapters from other ISVs

Web Applications

Data Selector
Web Viewers
ArcGIS Server Integration

Data Management

↕ **This talk**

GIS Integration

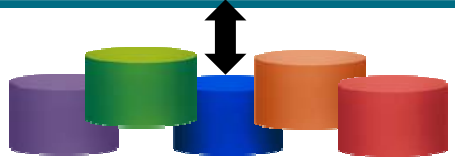
Application Integration

↕ Web Integration



Integration Framework

Corporate and Project Data Stores



GIS Integration



Manage Spatial Data

- **Scan Utility**

“Publish” all your G&G spatial data to your SDE, File Geodatabase, shapes files, other... (and keep synchronized)

Make G&G spatial data available to GIS users

- **SDE Data Connector**

Make SDE features available to G&G apps via OpenSpirit data service

Make GIS data available to G&G users

Use GIS Client of Choice

- **ArcMap (ArcGIS Desktop) Extension**

Share data and GIS selections with other desktop OpenSpirit enabled applications

- **Web Mapping Application or REST Map Client (ArcGIS Server)**

Send data and GIS selections to desktop OpenSpirit enabled applications from a web browser map

- **ArcGIS Explorer Add-In (free)**

Share data and GIS selections with other desktop OpenSpirit enabled applications

Allow GIS maps to interact with G&G applications



Scan Manager 2010



- Plug-in to new Desktop (v3.2.2)
- Outputs to SDE, shape files, file geodatabase, or via plug-in to any file or database
- Uses new scheduler
- Uses model view to define what data types/attributes are read and what they are named
 - Native or common model
- Uses data selector to optionally subset data
- All jobs are centrally managed - job definitions and runs
- Customizable feature update rules
- Access to Scan Manager controlled by User rights manager



ArcGIS Extension 2010



Works with ArcGIS 9.3 and 9.3.1 and OpenSpirit v 3.2.2

Enhancements over current ArcGIS Extension:

- Send/receives data in original CRS
- Prompts for datum shift (if required)
- Allows drill down to select related data (e.g. select wells and then see associated logs, picks and checkshots)
- Open a project and dynamically see well and seismic data on map
- Send/receive GIS events with all fields (including simple display attributes)
- Features created as in-memory features unless user chooses to save them



Desktop GIS Integration



Free

- Send/receive data selection events
- Send/receive GIS events
- Send/receive cursor event
- Send/receive map view definition event



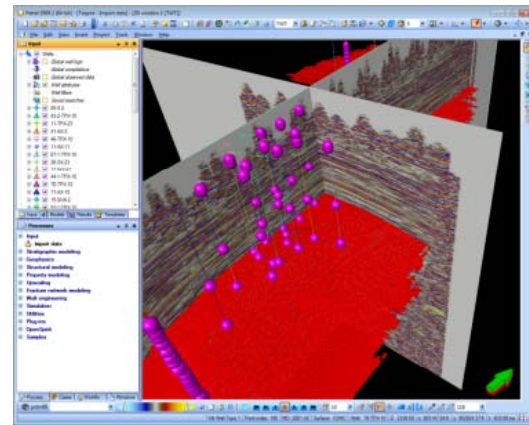
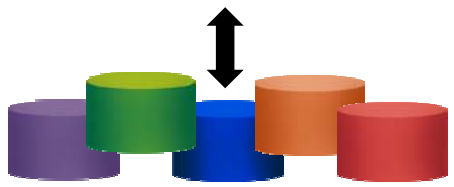
- Send/receive data selection events
- Send/receive GIS events
- Send/receive GRID event
- Send/receive cursor event
- In memory configurable features



- Open project and browse well, seismic, and interpretation data

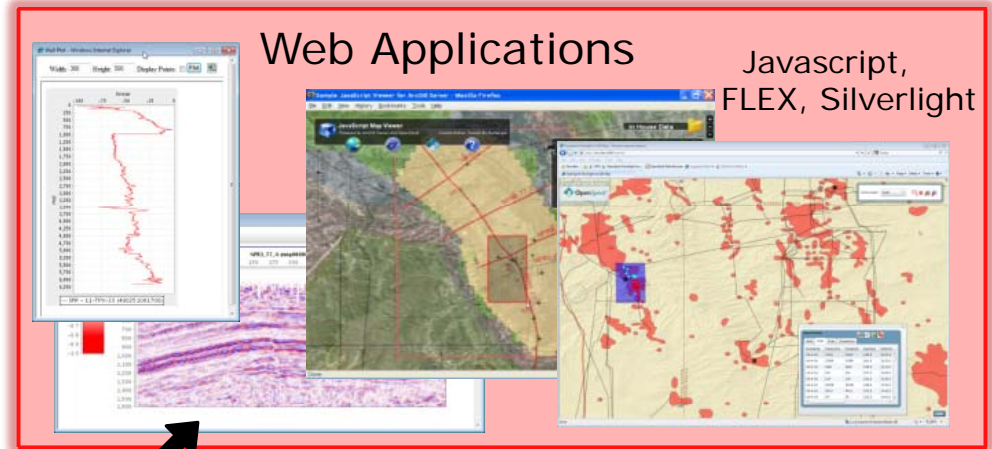
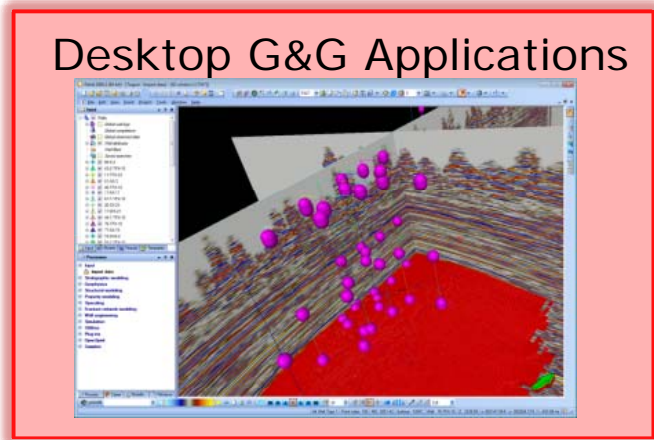


Corporate and Project Data Stores



G&G Vendor Application with OSP Adapter

Web Based GIS Integration



Read/write data



Send/receive interaction events

REST API

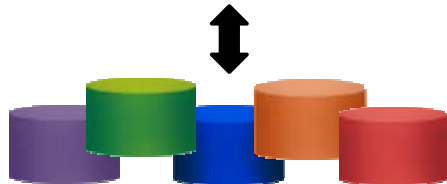
View data, send data & GIS selection events

REST API

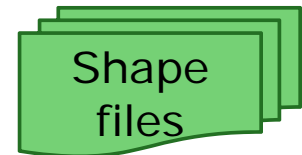
or WebADF



Finder
PPDM
Managed SEGY
Recall
EPOS (Geolog)
Seabed



OpenWorks
GeoFrame
Kingdom
Petra
SDE



Live Demo

right
from the **start**



 **OpenSpirit**

Summary



- Scan Manager
 - Highly configurable tool to extract selected data from projects and write to spatial formats (or other)
- Desktop GIS Integration
 - ArcGIS or ArcGIS Explorer
 - Spatially browse data
 - Share data selection, GIS selection, and cursor events with other OpenSpirit-enabled applications
- Web GIS Integration
 - Use OpenSpirit Web Server to browse data in Web
 - Send GIS or data selections to desktop applications





Todd Broussard
todd.broussard@openspirit.com
+1 281 295 1400



OpenSpirit **right**
from the **start**