



Partner Update Integration on the Horizon



EAGE 2010
Brian Boulmay
Director, Business Partners



Partner Program



- Introduced Business Partner Program in 2008
 - Focus across Technical, Business, Sales, and Marketing activities
 - Consistent approach across partners

- Increased activity with existing Partners
 - Renewed focus on maximizing business relationships

- New Partners
 - Many new partners in 2009/2010...
 - ***Expanding your integration possibilities...***



Available Today



TrapTester



IRAP RMS



**IP
ODM3**



Ipoint



**ArcGIS Desktop*
ArcGIS Explorer*
ArcGIS Server*
SDE Data Connector***



**RokDoc
FaultX**



FastTracker



JewelSuite

*OpenSpirit Product



Available Today



Prima



Seisware



**DrillWorks
Predict
OpenWire
OpenWorks Data Connector*
Powerhub OpenSpirit Connect**



**Kingdom Application
Kingdom Data Management
Kingdom Data Connector***



Tigress TIES



Orchestra



SVI Pro, SEA 3D

*OpenSpirit Product



Available Today



EQLoader 2.0



Excel



GeoView, STRATA,
AVO, eLog, EMERGE,
ISMAP, PRO4D,
PROMC



Constellation



TerraSuite



Petrel
Innerlogix
Techlog **Techsia**
ProSource
DecisionPoint
Seabed Data Connector*



GoCAD
SKUA
StratEarth
EPOS OSP Link
EPOS Data Connector*

*OpenSpirit Product



Integration Partners



Companies that develop, implement, and/or use OpenSpirit software and development environment as part of their consulting and project services business

OpenSpirit Integration Partners...



Infosys & ETL are ready to take on DC work

Integration Partners have:

- integrated OpenSpirit into Portals
- enabled Enterprise Search
- developed OpenSpirit Application Adapters for other partners
- supported OpenSpirit on development efforts
- supported customers on strategy, deployment and support exercises

In Discussions....



Alliance Partners



Companies and/or Organizations that we work with in the Industry...

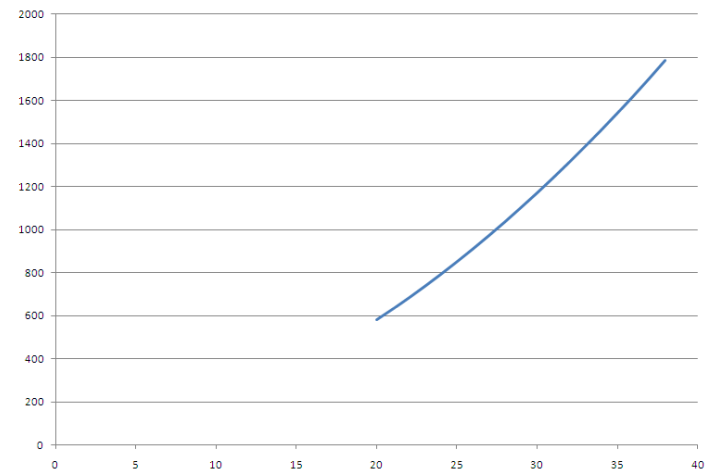


Integration on the Horizon

$$(N * M) + N^2 = X$$

$$M + 2N + 1 = Y$$

$$X + Y = \text{Total Number of Workflow Opportunities..}$$



N - OpenSpirit Enabled Applications
M - OpenSpirit enabled Data Stores

Integration on the Horizon



Building on the improved data connector at Kingdom 8.4 and the new Kingdom Data Management at Kingdom 8.5 (released Jan 4th)...

SMT is now working on their new Kingdom Application Adapter – The new tool will be a maintenance upgrade to TunnelO and will include many of the capabilities of the current OpenSpirit framework (based on OSP AAT)



GoCAD/SKUA/StratEarth –3.x support is due to go out at mid year with RFC 2010 – this will include several enhancements and new capabilities such as GIS events

EPOS OpenSpirit Link – goal to complete all transfer capabilities and data type support by mid year (RFC 2010)



Integration on the Horizon



Petra – The Petra team has started on an OpenSpirit Application Adapter for the Petra application to complement the existing OpenSpirit Petra Data Connector

Enerdeq – OpenSpirit and IHS worked together to build a prototype application to interactively query Enerdeq web services and directly pull data into OpenSpirit enabled data stores

We are testing the IHS Canadian Data Hub as an OpenSpirit enabled PPDM data source

Neuralog's NeuraDB application leverages the industry standard PPDM 3.7 Database model which makes it available to all OpenSpirit enabled applications by using OpenSpirit's PPDM data connector

Neuralog is also enabling NeuraSection with an OpenSpirit Application Adapter which should be available by year end – See your Neuralog account manager.



Integration on the Horizon



Petrosys has built an initial prototype and is seeking customer feedback – contact Scott Tidemann

Primary focus has been additional data access and user interaction events to enable seamless workflows for users across multiple applications



Fugro Jason already has connectivity with FastTracker
Now looking at possibilities with Powerlog and Workbench...



Fugro Data Solutions is now testing their OpenSpirit Application Adapter for Trango Wells and is currently integrating Trango Seismic... System is in beta now at a large customer in Houston.

Fugro Data Solutions

Trango Well Database works as an OpenSpirit PPDM data source



Integration on the Horizon



OpenSpirit is releasing a new ArcGIS application adapter (mid 2010) and enhancing the SCAN Utility (mid 2010) The new SCAN will add File GeoDatabase support along with several new functionality enhancements.

We now have ArcGIS Server examples in WebADF, Javascript, and Silverlight. These samples also integrate the OpenSpirit Web Server with ArcGIS Server

ArcGIS Explorer Build 1200 – OpenSpirit add-in is released – you can download at OpenSpirit Webpage

OpenSpirit was named **2010 ESRI Partner of the year** – for the Energy Domain...

Petris is building an OpenSpirit application adapter for DataVera to enable their QA/QC workflows to work across any OpenSpirit enabled database.



Petris has joined the OpenSpirit Partner Program to OpenSpirit enable the Petris Winds Enterprise Platform – this will add more data sources – and access to interoperability events



Integration on the Horizon



DataFlux, A SAS Company, is leveraging the OpenSpirit Framework to extend their market leading data management solution to Oil & Gas industry and G&G data stores

They are looking for a sponsor company to help guide the development

Midland Valley Exploration (MVE) has joined the OpenSpirit partner program to enable future versions of 2D, 3D, and 4D Move to leverage the OpenSpirit integration and interoperability framework.



Integration on the Horizon



EnergyIQ has joined the OpenSpirit Partner program to enable their flagship product – EIQ Loader – First release is available now!



EIQ Loader is designed to consume data sources, such as the IHSE Enerdeq data (domestic & international) and now via OpenSpirit will be able to write this data into any OpenSpirit enabled database.

EIQLoader 2.0 was released in April with support for the domestic data feed

The Landmark-Geographix team is now working on an Application adapter to be released end-2010 – please give feedback and requirements to Scott Oelfke.

The Landmark Powerhub team released Powerhub Connect for OpenSpirit in April 2010 – first release is read-only.



Integration on the Horizon



ffa has joined the OpenSpirit Partner program to enable ffa's SVI Pro and SEA 3D Pro seismic analysis applications. The goal is to be able to reach out to any OpenSpirit-enabled data store to access data and share interaction events with other geotechnical software.

Commercial release is available now...

OpenSpirit Ocean Petrel Application Adapter (OPAA) is released.

Schlumberger also released OpenSpirit support for the Innerlogix application suite in 2009.

Development and testing ongoing for Seabed DC

Techlog to go to 3.x late this year



Integration on the Horizon



DownUnder GeoSolutions has joined the OpenSpirit partner program to enable DUG Well, which is used for log visualization and manipulation, format conversion, Gassmann substitution and deterministic AVO modeling; and DUG Insight, a the 2D and 3D package for seismic interpretation to enable connectivity and ensure DUG software is immediately intergratable and accessible for their user's workflows.

OpenSpirit and Kongsberg have an alliance that provides complete end to end WITSML solution via OpenSpirit LoadIT WITSML tool and SiteCom to provide Real-Time data from the rig site back to G&G Asset teams



Integration on the Horizon



Jurassic has teamed with OpenSpirit as both an agent in China as well as an integration partner. Jurassic is currently working to enable their Geomap application with an OpenSpirit Application Adapter as well as deliver JuraSEGY – a commercial solution for loading SEGY data to the OpenSpirit Managed SEGY datastore.

JursSEGY is in testing now

Perigon Solutions built the first IPoint integration with OpenSpirit last year – In the coming year they are expanding on that initial work to add sending events, live data links via OpenSpirit, and view definition events...



New release is being shown at EAGE in June...



Integration on the Horizon



Pointcross – GARS Geophysical Activity Reporting System and PARS Project Activity Reporting System are both business process solutions that run on Orchestra 3.2.4 platform (Ontology engine/MetaData server) that enable Read/Write connection to multi-vendor data stores – PointCross is planning to upgrade their OpenSpirit connection to 3.X in 2010 enabling more comprehensive search capabilities leveraging the Scan Utility

OpenSpirit and the ISSGroup are in conversations around OpenSpirit enabling the BableFish Portal – a Web Based ‘real-time’ data visualisation and integration suite – Adding OpenSpirit integration will add access to G&G data and application allowing data in context on the web – and interoperability our to other G&G software products.



Integration on the Horizon



Fusion Technology completed their initial prototype connection to OpenSpirit in 2009 and plan to finish a commercial release in 2010

Roxar is upgrading their OpenSpirit Application Adapter for RMS to our 3.x architecture and expanding their use of interoperability events...



More will be presented at the European Symposium in June



Integration on the Horizon



Austin Geomodeling (AGM) has joined the OpenSpirit partner program to enable RECON as part of the Recon 4.0 release

This will enable access to all OpenSpirit enabled data sources as well as enable interoperability events.

Siemens has announced OpenSpirit integration with their XHQ Operations Intelligence Solution. The XHQ platform aggregates, relates and presents operational and business data in real-time to improve enterprise performance.

End users will now have a single coherent view of this information along with all of their G&G information via OpenSpirit web services.

The logo for Siemens, featuring the word 'SIEMENS' in a bold, teal, sans-serif font.



Integration on the Horizon



SAFE Software has joined the OpenSpirit Partner Program to OpenSpirit enable FME Workbench. This will enable the OpenSpirit model as both a reader and writer in the FME framework.

Prototype was demonstrated at PUG in Feb 2010 in Houston – Beta Program started in May 2010

The OpenSpirit Reader/Writer will be supported with the current FME 2010 release.

Whereoil Enterprise allows customers to find and manage all their data, structured or unstructured, wherever they are, from one, easy-to-use interface.

Working with OpenSpirit Whereoil will now have access to even more data sources as well as leverage OpenSpirit interoperability events to gives users streamlined access to data directly from their search results



K A D M E



Integration on the Horizon



Microsoft[®]

*Upstream
Reference
Architecture
Initiative*

OpenSpirit joins Microsoft Corp. and other solution providers as part of the newly announced Microsoft Upstream Reference Architecture Initiative.

Microsoft launched this initiative in an ongoing effort to enable collaborative workflows and multi-vendor data accessibility across the full E&P business.

The project leverages technologies from several partners to bring together data, systems, and workflows from geoscience, production, operations, finance, and other critical business areas.



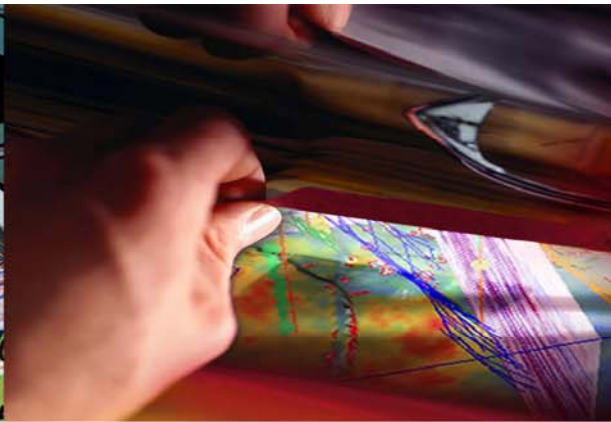
Integration in Discussion



- ALT (Advanced Logic Technology)
 - Discussing OpenSpirit connectivity for their log tools (WellCAD)
- Tibco (Spotfire)
 - Discussions around app adapter
- Divestco (Geocarta tools)
 - Interested in enabling a few apps in their portfolio – next meeting May 2010
- NOV/MD Totco & Petrolink
 - LoadIT Partnership Opportunities (WITSML)
- Kelman
 - Discussing several collaboration projects that would OpenSpirit enable their solutions and workflows
- Blue Marble Geographics
 - Discussing several collaboration projects that would OpenSpirit enable their suite of applications
- Enigma Data Solutions
 - Discussing collaboration opportunities around data archive workflows
- IStore
 - Discussing collaboration opportunities across several visualization and presentation layers
- Performix
 - Initial discussions started with reference from customer
 - OpenSpirit LoadIT supports Performix WITSML stream
- Horizontal Drilling
 - Discussing integration – next steps July 2010
- GeoLeader
 - Discussing integration for Russian market specific applications and databases
- RichFit
 - Discussing integration for Chinese market specific applications and databases



Brian Boulmay
brian.boulmay@openspirit.com
+1 281 295 1400



OpenSpirit
right
from the start