

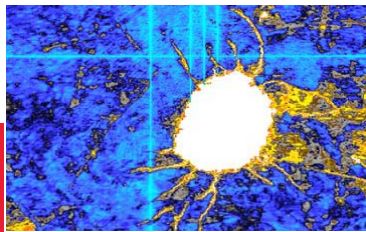
Seismic Micro-Technology, Inc.



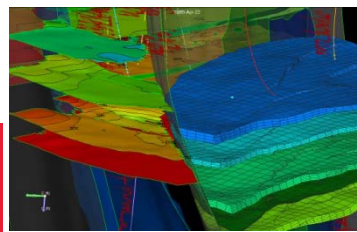
# KINGDOM Connect – Co-existence in a Multi-Domain World

OpenSpirit Forum – Barcelona 2010

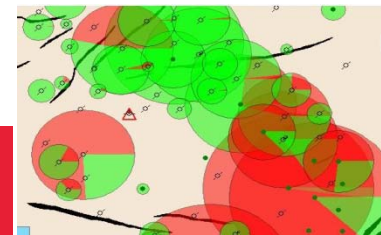
Kay Sutter - Product Manager



Interpretation

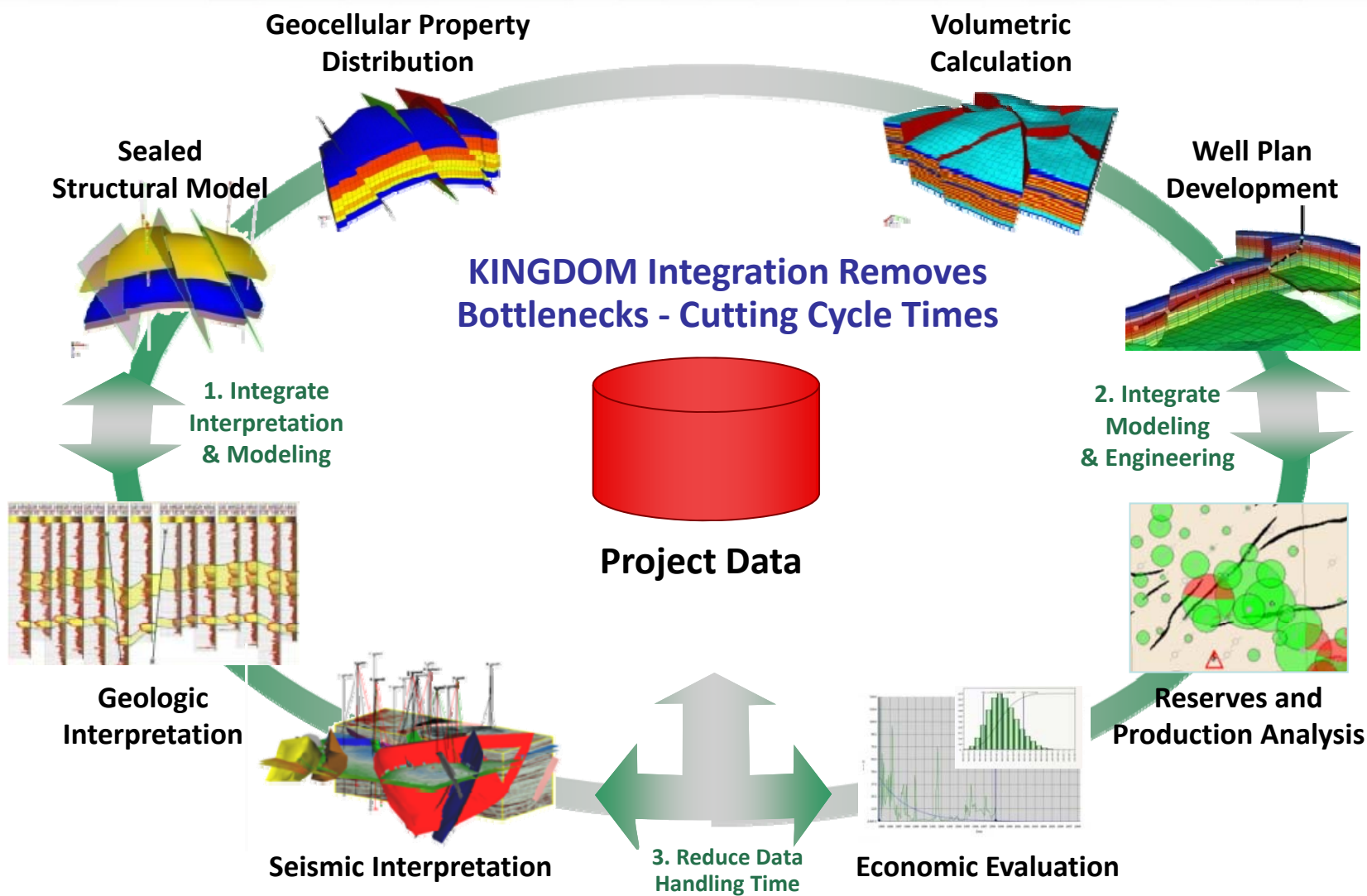


Geomodeling

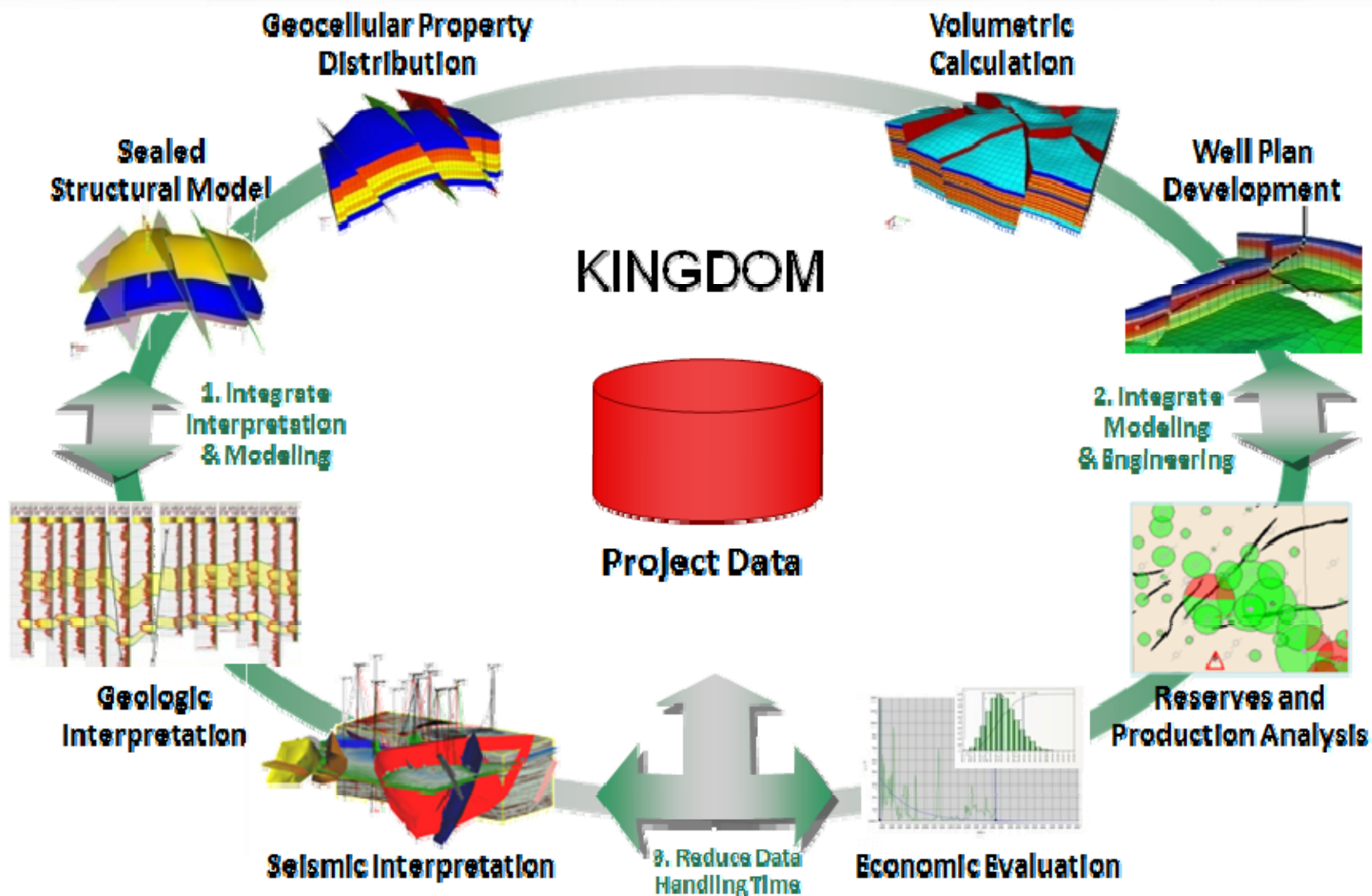


Production Economics

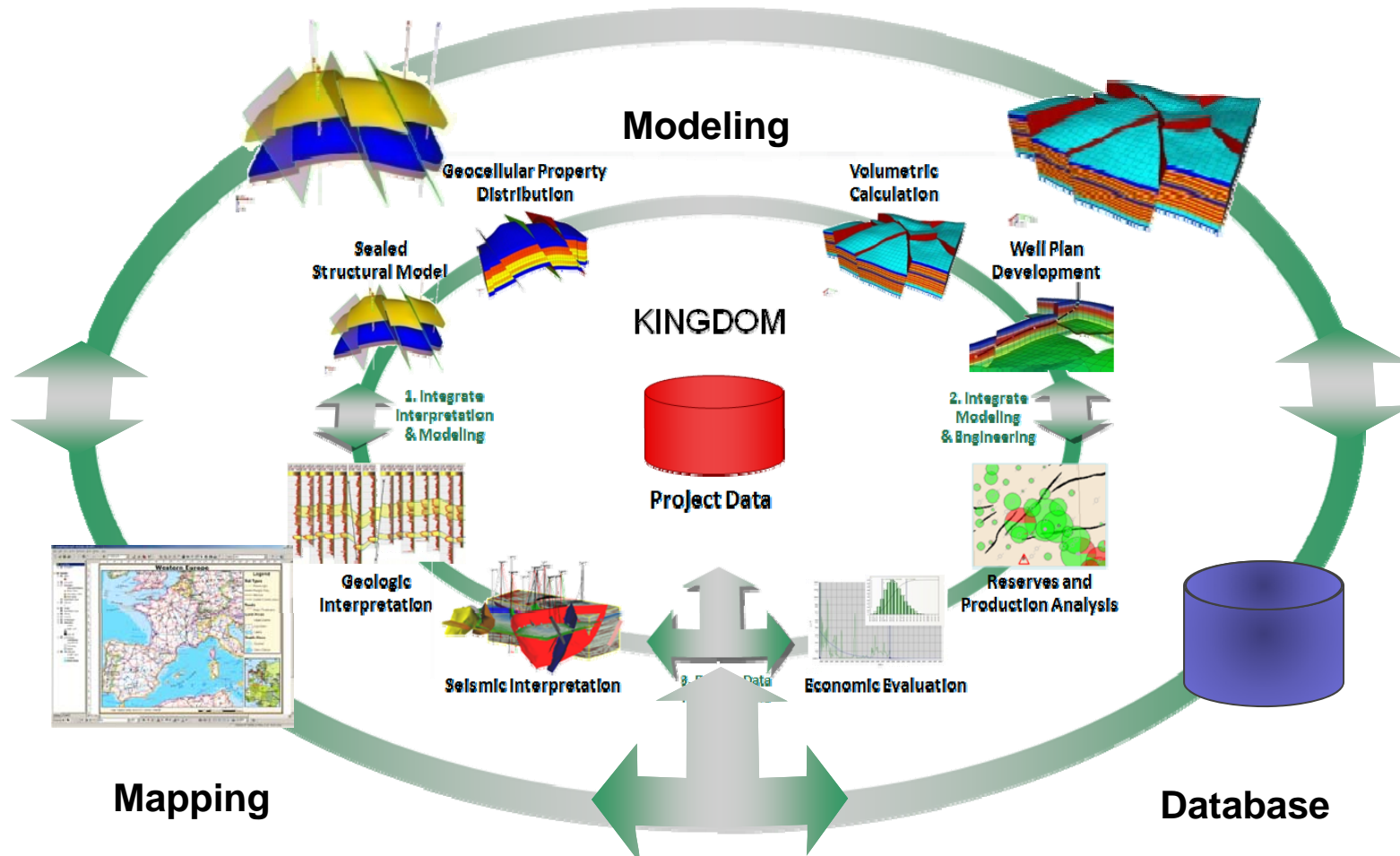
# KINGDOM Integrated Workflow



# KINGDOM Integrated Workflow



# Connectivity Beyond KINGDOM

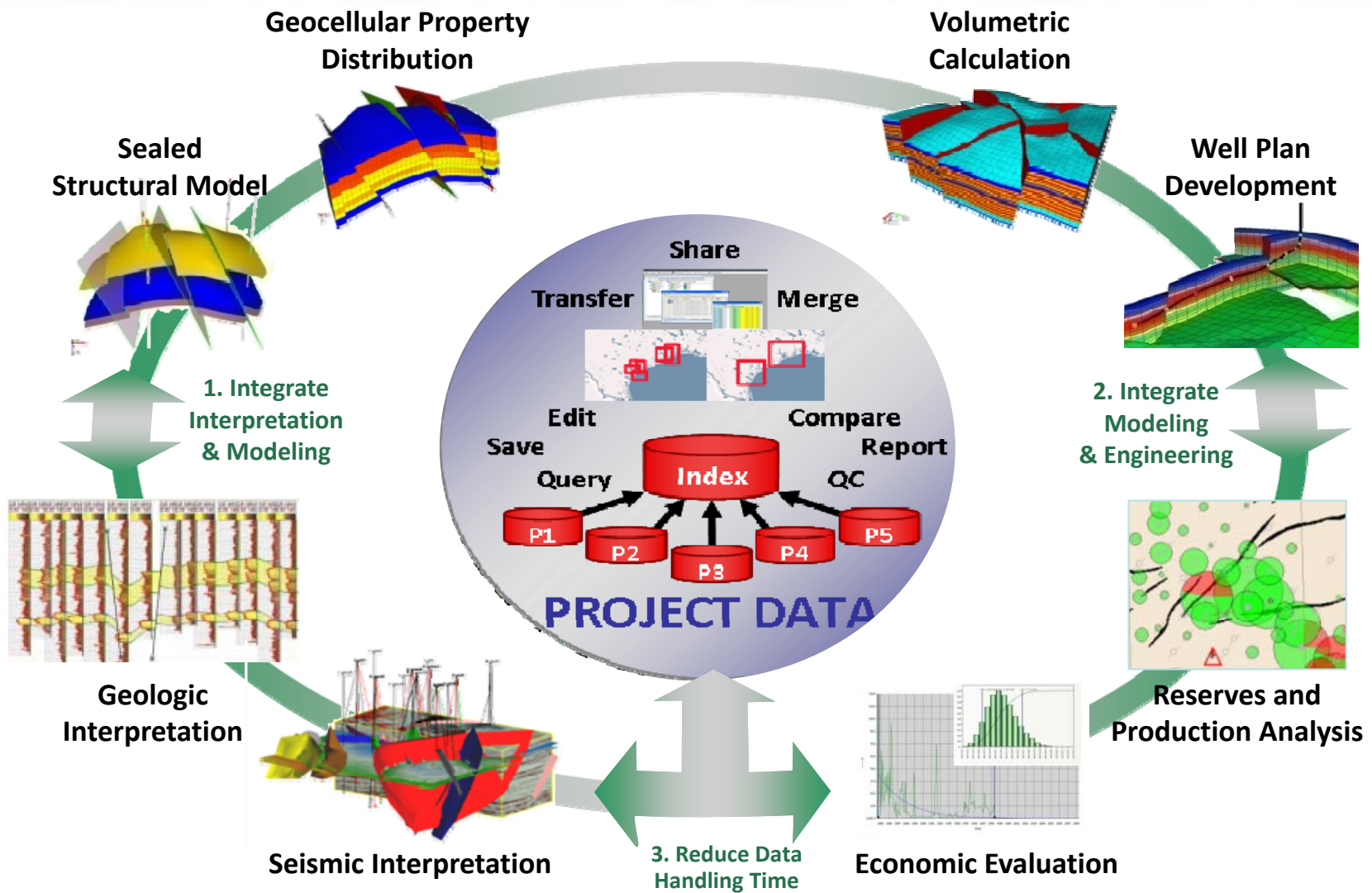


## What has the Last 2 Years Brought Us?

- Data Connector updates for performance KINGDOM 8.4
  - Improved throughput
  - Large project handling




# What Really Happens in Data Management

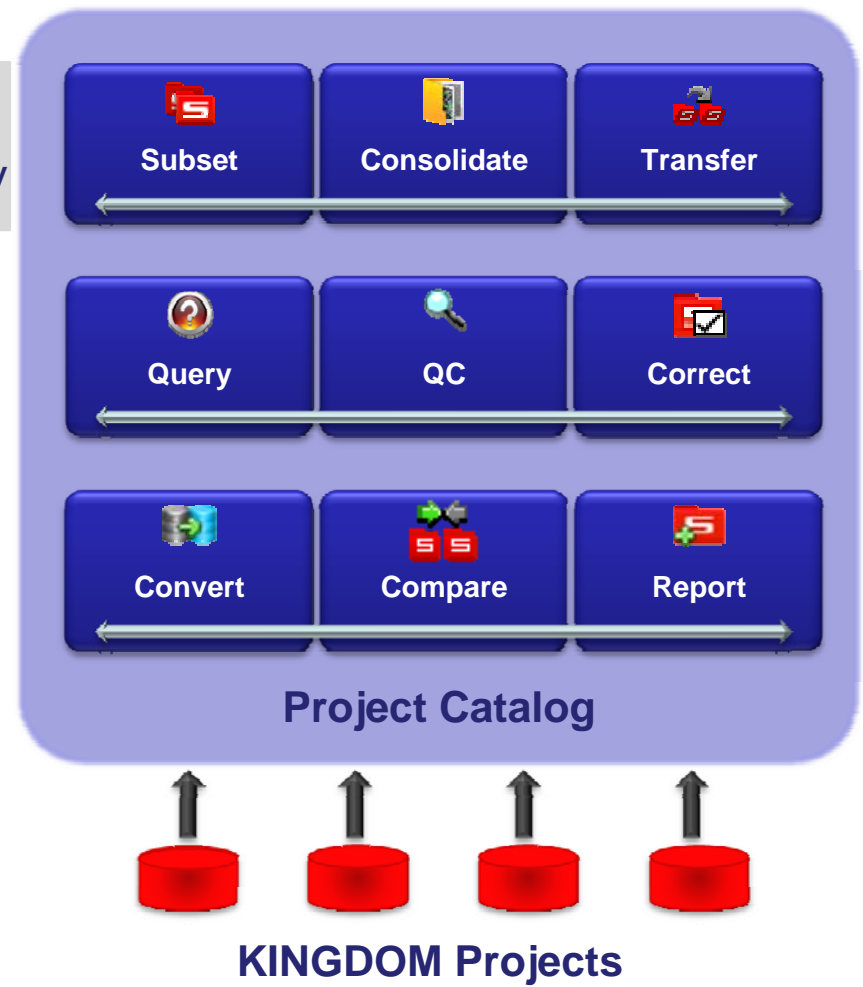




# KINGDOM Data Management

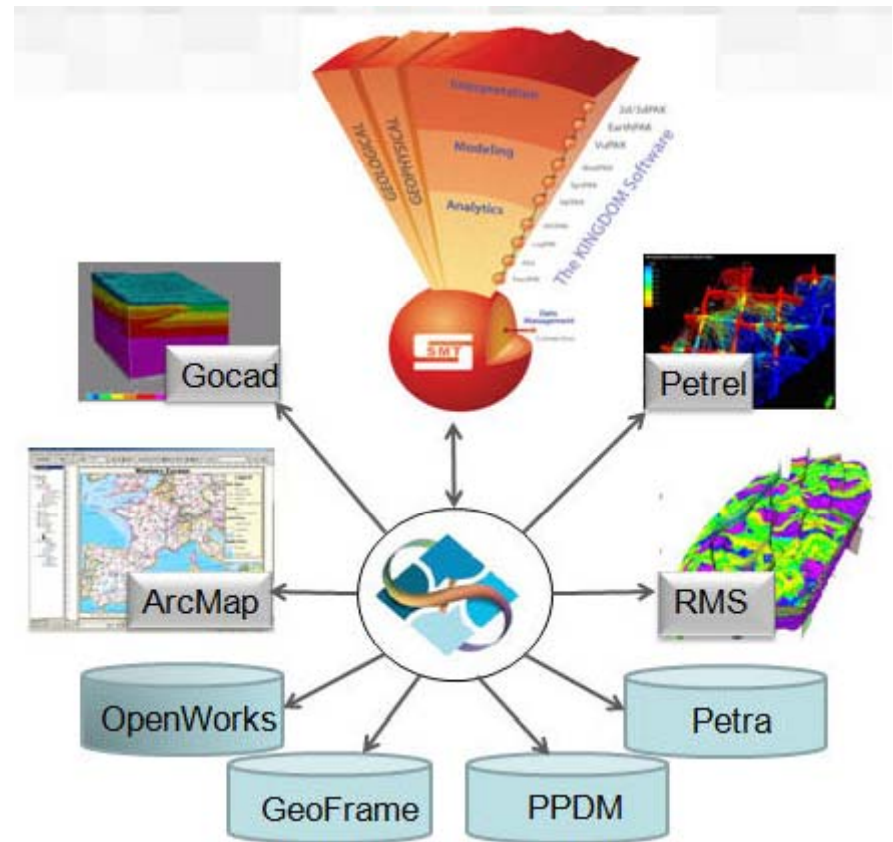
Leverage data transfer workflows for project cleanup, consolidation, and mobility 

OEM Copy Manager for KINGDOM to KINGDOM data transfer allowing SMT to bring the #1 most requested feature for our customers to market.



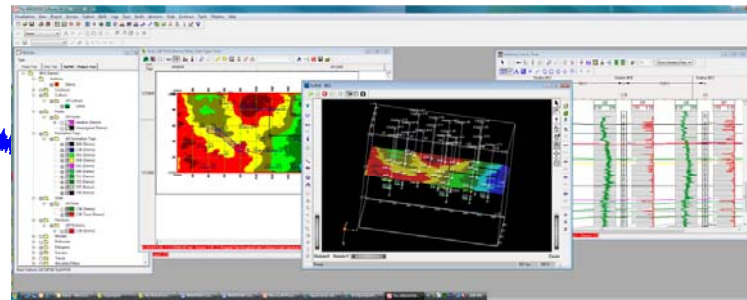
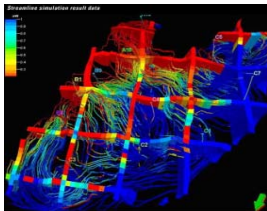
## Changing the Game

- *The next generation Kingdom Application Adapter will leverage the full power of the OpenSpirit Application Adapter Toolkit to allow interpreters to seamlessly share data with any OpenSpirit-enabled application or data repository.*

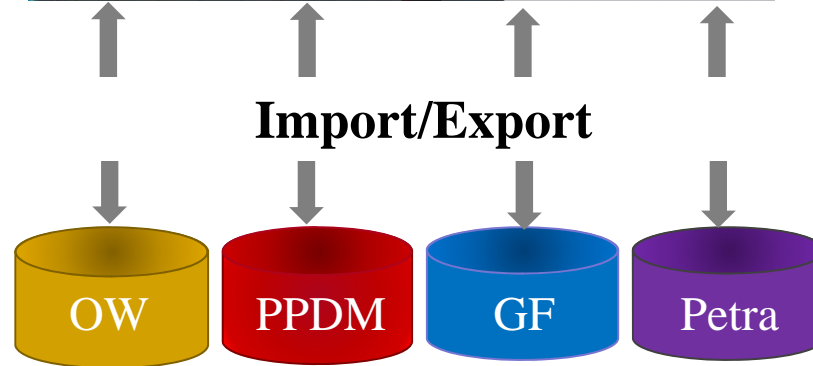


# KINGDOM Connect

## Data Events



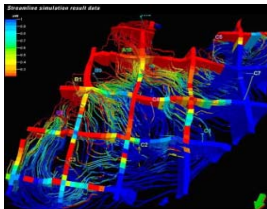
- Wells
- Logs
- Picks
- 3D Seismic
- Live Access
- 2D Seismic
- Horizons
- Faults
- Grids
- Culture



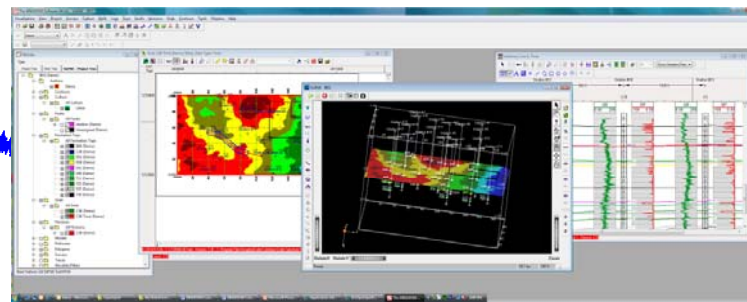
Automatic Coordinate and Unit conversion  
Intelligent repository update with rules (Overwrite/Skip)

# KINGDOM Connect

## Data Events



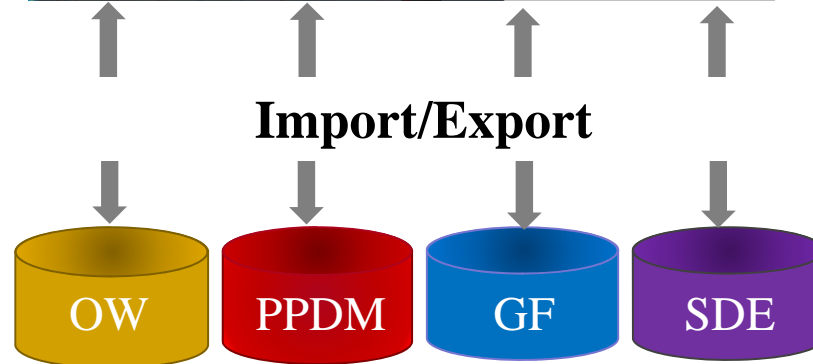
- Wells
- Logs
- Picks
- 3D Seismic
- Live Access
- 2D Seismic
- Horizons
- Faults
- Grids
- Culture



## GIS Events



- Wells
- 3D Geometry
- 2D Geometry
- Horizons
- Grids
- Culture



Automatic Coordinate and Unit conversion  
Intelligent repository update with rules (Overwrite/Skip)

# Next Generation KINGDOM Data Management

- ❑ Broadening our philosophy of co-existence in a complex and multi-domain world.
  - ❑ ***KINGDOM Data Management*** significantly reduces time to deliver clean projects to the geoscientists
    - ❑ *Streamline data exchange between KINGDOM Projects*
    - ❑ *Consolidate projects to promote a clean environment*
    - ❑ *Deliver the “right” data in the “right” project for interpretation*
  - ❑ ***KINGDOM Connect*** provides simple multi-vendor co-existence
    - ❑ *Broadcast data between listening applications*
    - ❑ *Share cursor tracking*
    - ❑ *Streamline the workflow between disparate vendors*



# SMT and OpenSpirit

## *Where will we go next?*

