

OpenSpirit Data Transfer Workflows

Data transfer processes should be smooth, but depending on the complexity of your environment, you have already experienced the fundamental integration challenges that exist in today's multi-vendor environments. OpenSpirit copy utilities are designed to:

- Operate in a multi-vendor, multi-version data store environment
- Replace manual ASCII import/export or other custom scripts to move well, seismic and interpretation data between multiple projects and data stores
- Ensure data quality as it moves across the infrastructure

To replace error-prone processes that involve multiple people, multiple steps and too much time and effort, oil companies depend on OpenSpirit for their daily workflow needs.

Seamless Data Transfer Using Copy Manager 2010

This next generation Copy Manager utility will help you improve efficiency and automate workflows with one-step data transfer among OpenSpirit-enabled data stores. Data can be copied from multiple source projects to a destination project in a single step without any intermediate files or steps, making ASCII procedures a thing of the past. Data may be selected by examining attributes or by spatial query using a GIS selection in ArcGIS.

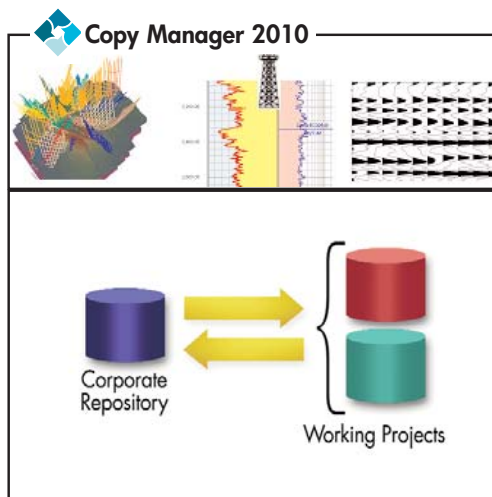
With Copy Manager 2010, you can Match and Merge data between project data stores for synchronizing data between data stores, as well as within projects. Copy Manager 2010 handles unit conversion and coordinate system transformations, and ensures that the data is copied in the right format. Users can create customized copy rules for each data transfer and preview copy jobs before transferring data.

Copy Rule Manager

Set up business rules for data transfer not only at the entity level (e.g., Well Bore), but also at an attribute/column level (e.g., Well Identifier, Well Name) with the new Copy Rule Manager.

Users have complete control over matching criteria between two data stores and also conditions for updating data. Advanced abilities like derived attributes and Java scripting give additional flexibility for the technically savvy data managers to control data transformation and validation.

In addition to giving data managers the control to enforce business rules, the Copy Rule Manager ensures that bad data is not replicated across data stores or projects, resulting in high data quality.



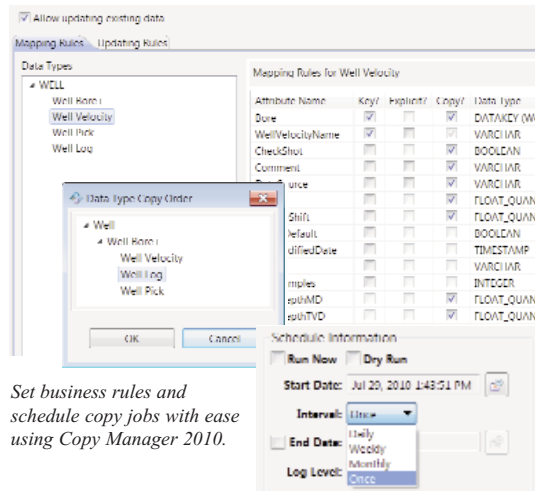
Two Options for Streamlined Data Control

With a host of flexible query builders and data selection options, OpenSpirit copy utilities let you can select data from OpenSpirit-enabled data stores in your network, allowing you to mesh projects from disparate data sources and versions.

- Perform seamless, one-step, data transfer between OpenSpirit-enabled project data stores
- Streamline process of initial project loading and improve data-transfer efficiency
- Automate workflows to ensure that relevant data is available in working projects at the right time
- Save time and reduce risk by eliminating processes that require time-consuming and error-prone intermediate file formats
- Convert unit, coordinate, and attribute values on the fly based on the requirements of target project

Copy Manager 2010

- Transfer well data between project data stores (OpenWorks 2003.12, Finder 9.5 and Petra 3.2.7.1 are supported in this release)
- Match and Merge data between project data stores
- Schedule copy jobs (daily/weekly/monthly) using the **new Job Scheduler** integrated into OpenSpirit v3.2.2
- Setup advanced business rules using the **new Copy Rule Manager** (licensed separately)
- Make use of an embedded Data Selector with advanced selection and filtering capabilities
- Leverage a common look and feel with other OpenSpirit Desktop plug-ins
- Copy Manager 2010 uses the same license feature as Classic Copy Manager (only the new Copy Rule Manager is licensed separately)



Set business rules and schedule copy jobs with ease using Copy Manager 2010.

Classic Copy Manager

- Transfer well, seismic and interpretation data between project data stores
- Classic Copy Manager will still be available with support for all data stores/data types and will not be retired until all the current functionality has been made available in the next generation Copy Manager 2010 product

OpenSpirit Data Connectors

OpenSpirit enables your applications to create, read, update and delete data from anywhere within your network using data connectors for your specific databases.

- OpenWorks/SeisWorks
- GeoFrame/IESX/Charisma
- Finder
- KINGDOM
- ArcSDE
- Petra
- Managed SEGY
- Recall
- Epos3/Geolog
- PPDM
- Including:
 - geoLOGIC Data Center (gDC)
 - IHS Canadian Data Hub
 - Fugro Trango Well
 - NeuraDB
 - Oilware

Contact sales@openspirit.com to more about data transfer workflows using Copy Manager!



Enabling Cross-Discipline Collaboration in the Digital Oilfield

Increasing reservoir complexity demands comprehensive analysis coupled with excellence in science. Multi-vendor environments allow you to bring together the best tools to view the subsurface, making collaborative workflows and cross-discipline decisions a business imperative.

However, fundamental integration challenges still exist in our industry. Data locked away in diverse data stores, multiple legacy projects and inherited IT environments are a barrier to realization of this Digital Oilfield vision.

At OpenSpirit, our sole focus is integration:

- SOA
- Standards Based
- Platform Independent
- Vendor Neutral
- Event Driven

As the industry's undisputed open-integration standard, OpenSpirit is the key to achieving true workflow transparency.

OpenSpirit Corporation Headquarters

4800 Sugar Grove Blvd.,
Suite 500
Stafford, Texas 77477 USA
Phone: +1 281 295 1400
sales@openspirit.com

www.openspirit.com

©2010, OpenSpirit Corporation. All rights reserved. OpenSpirit is a registered trademark of OpenSpirit Corporation. All other trademarks, service marks and product names are the trademarks or names of their respective owners.

July 2010