

Ocean-Petrel Application Adapter from OpenSpirit

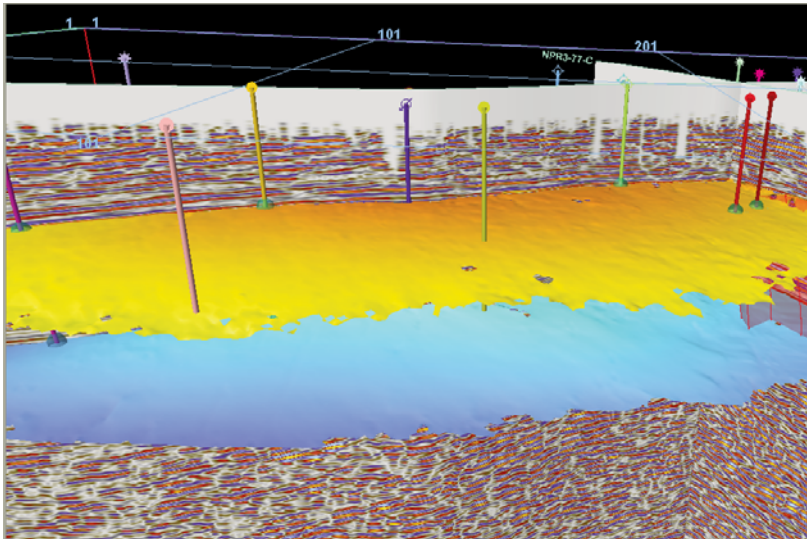
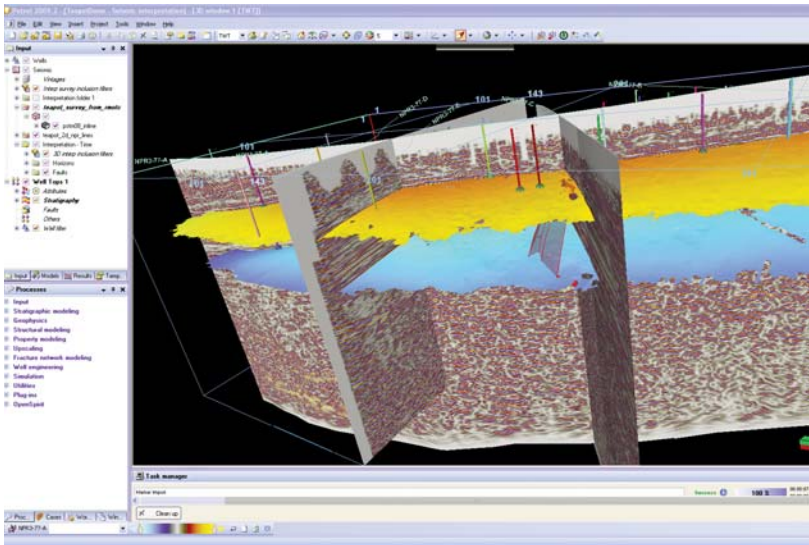
Using the new Ocean-Petrel Application Adapter (OPAA) from OpenSpirit, you can access G&G data anywhere in the enterprise and take control of your interpretation workflows. Focusing on interpretation is now easier than ever before.

The Ocean-based adapter offers seamless access to all the industry-standard project data stores, including GeoFrame, Finder, OpenWorks, PPDM, Recall, SEG Y, SDE, and KINGDOM. End users can simultaneously work on multi-vendor and cross-disciplinary data stores with a simple step, without the need to learn multiple user interfaces. Petrel users can now be liberated from the time-consuming task of searching for the right data to load into Petrel.

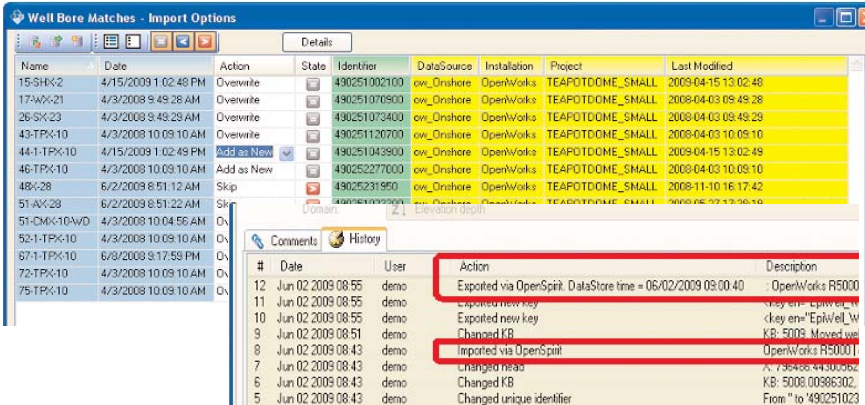
Customization and Ease of Use

OPAA offers enhanced workflow possibilities and ease of use for both new and existing Petrel customers, such as:

- Data type and event coverage for well, seismic, interpretation, and culture data:
 - Well data includes well logs, picks and velocities
 - Interpretation data includes horizon grids, fault polylines, and horizon-fault boundaries
 - Import 2D/3D seismic surveys, lines, and datasets
 - Import horizon and fault pointsets and horizon-fault boundaries
 - Send/receive cursor tracking events
 - Send GIS events for objects with geometry
 - Selectively view bulk data on demand, such as previewing selected lines from a large 3D seismic volume without having to load entire data into memory
 - Import point, polyline, and polygon features directly from SDE



- Match-N-Merge ability allows easy synchronization of data between Petrel projects and project data stores using familiar Petrel user interfaces. Users can control which attributes to match.
- Audit trail on objects imported/exported via OpenSpirit enables history tracking.
- Automatic unit and coordinate conversions from project data store to Petrel on the fly.
- Work simultaneously with data from multiple projects setup with multiple unit and coordinate systems. OPAA will do the hard work of presenting data in a user-preferred unit and coordinate system using industry-standard EPSG codes.



Match-N-Merge (import/export) – on customizable set of attributes – for all data types with Audit trail to improve Petrel project history tracking.

- Intuitive project wizards offer a simplified user experience. Wizard-Driven Data Validation prompts users when critical data is required, eliminating errors resulting from incorrect project setup, such as invalid cartographic reference, unit, or seismic reference datum.
- Interact with other OpenSpirit-enabled applications using OpenSpirit Data Selection/Grid/GIS events.
 - Send well information from Petrel to GOCAD or send culture data from ESRI ArcMap to Petrel
- Interact with other applications, such as iPoint, SeisWare, RokDoc, ProSource, Google Earth, and the OpenSpirit Web Server.
- Import, save, and display attributes from data stores even if attributes do not map to standard Petrel attributes.
- Released, maintained, and supported by OpenSpirit.

For more information about using Ocean-Petrel Application Adapter to streamline your G&G workflows, contact OpenSpirit today!

sales@openspirit.com
www.openspirit.com



Enabling Cross-Discipline Collaboration in the Digital Oilfield

Increasing reservoir complexity demands comprehensive analysis coupled with excellence in science. Multi-vendor environments allow you to bring together the best tools to view the subsurface, making collaborative workflows and cross-discipline decisions a business imperative.

However, fundamental integration challenges still exist in our industry. Data locked away in diverse data stores, multiple legacy projects and inherited IT environments are a barrier to realization of this Digital Oilfield vision.

At OpenSpirit, our sole focus is integration:

- SOA
- Standards Based
- Platform Independent
- Vendor Neutral
- Event Driven

As the industry's undisputed open-integration standard, OpenSpirit is the key to achieving true workflow transparency.

OpenSpirit Corporation Headquarters

4800 Sugar Grove Blvd.,
 Suite 500
 Stafford, Texas 77477 USA
 Phone: +1 281 295 1400
sales@openspirit.com

www.openspirit.com

©2010, OpenSpirit Corporation. All rights reserved. OpenSpirit is a registered trademark of OpenSpirit Corporation. All other trademarks, service marks and product names are the trademarks or names of their respective owners.

May 2010