

OPENSPIRIT

right
from the **start**

OpenSpirit Web Server

E&P professionals now have a new and better way to interact with their geotechnical data and applications, including GIS data in SDE.

Harnessing the power of Web 2.0 technology, the OpenSpirit Web Server allows you see information about your well, seismic, interpretation and culture data through a simple, lightweight browsing tool.

You can navigate, select and view data quickly, launch your data from any OpenSpirit-enabled application or data store, and even get a 3D panorama via the most popular map data tools.



Simple, lightweight browsing tool improves efficiency and decision making

- "Casual browser experience" is great for executives and G&G managers who need a quick spatial view of their areas of interest.
- "Power users" can get a quick glance at project data without tying up expensive application licenses. If desired, data may be selected in the Web browser and "broadcast" to OpenSpirit-enabled applications on the desktop.
- Customizable Web pages and integration with existing portals and Web applications provide maximum flexibility and ease of use.
- Operates behind IT firewall.

The only tool of its kind in E&P data management.

See basic information on well, seismic, interpretation and culture data at the project level

- Select data sources and data types of interest.
- Pre-define and personalize layers.
- See data from all connected OpenSpirit-enabled data stores.
- View data in a table view.
- Use simple Web viewers to review:
 - Checkshots
 - Logs
 - Wellbore paths
 - Horizon grids
 - 2D/3D seismic sections
- Import selected data into Excel® or OpenOffice with a single click.

View data in easy-to-use "Geographic Explorations Systems"

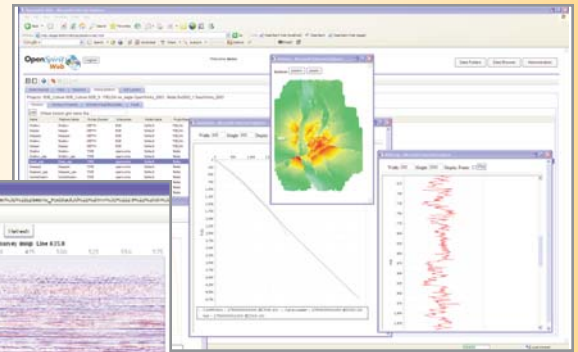
- The OpenSpirit Web Server creates dynamic kml (Keyhole Mark-up Language) layers which may be viewed in lightweight 3D browsing tools, such as Google Earth™, ESRI's ArcGIS® Explorer, NASA World Wind and Microsoft® Virtual Earth™.
- These applications allow overlay of OpenSpirit-generated well, seismic, GIS, and interpretation geo-registered layers on top of worldwide 3D raster imagery available from the Internet. This type of display makes information readily accessible to a broad range of users who may not be comfortable with more complex GIS applications.

Use the OpenSpirit Web Server in your own Web application

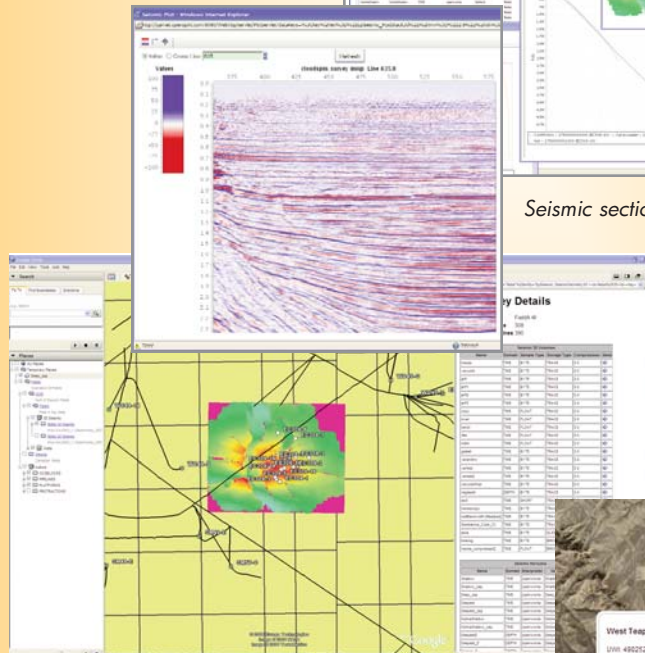
An easy-to-use subset of the OpenSpirit Framework is exposed in a set of Web services accessible via http, allowing users to:

- Access hierarchical list of data store types, installation and projects.
- Query for any attributes of OpenSpirit data types (well, seismic, interpretation, and GIS feature).
- Send data selection events (if user is logged into a desktop session).
- Return PNG-format images for checkshot, log, wellbore path, horizon grid and 2D/3D seismic section plots.
- Return kml describing the point, polyline, or polygon geometry of well, seismic, and GIS features, or a georeferenced horizon image.

Table view and user selected data types displayed in Web viewers.

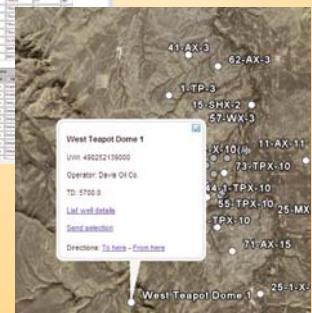


Seismic section viewer.



3D survey data from OpenWorks and SDE layers representing platforms, pipelines and lease blocks.

Details displayed from a well selected in Google Earth via a dynamic query to the OpenSpirit Web Server.



OpenSpirit Corporation Headquarters
 4800 Sugar Grove Blvd., Suite 500
 Stafford, Texas USA 77477
 Phone: +1 281 295 1400

For worldwide locations visit:
www.openspirit.com or email
info@openspirit.com

