



Application Interoperability : Focus on Ocean-Petrel Application Adapter



Clay Harter

OpenSpirit Technical Symposium

Houston – September 2010



OpenSpirit Tools

right
from the start



Desktop Applications



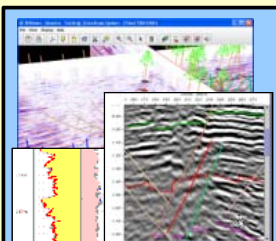
Copy Manager



Excel Adapter



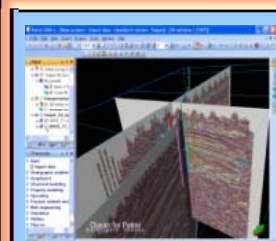
LoadIT WITSML



Data Selector
Desktop Viewers

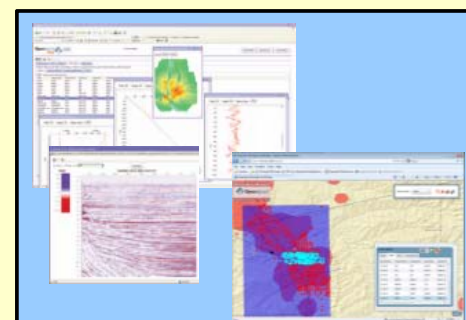


Scan Utility
ArcGIS Extension
Google Earth
ArcGIS Explorer
ArcGIS Server



OPAA
(Petrel plug in)
*Plus adapters
from other ISVs*

Web Applications



Data Selector
Web Viewers
ArcGIS Server Integration

Data
Management



GIS
Integration

Application
Integration

**This
talk**



Web
Integration



OpenSpirit

Integration Framework

Corporate and Project
Data Stores



OPAA - Ocean Petrel Application Adapter



- Replaces Schlumberger OpenSpirit Plug-in (not available after Petrel 2009.2)
- Enhancements
 - Simplified user workflows
 - No session required
 - No need to run OpenSpirit launcher
 - Enhanced data mgmt
 - Match and merge for all data types – import and export
 - Time datum shifts
 - Directional survey handles grid and true north
 - Audit trail
 - Enhanced treatment of Coordinate reference systems
 - Tag project with EPSG parameters
 - Send/receive cursor tracking event
 - Additional data types
 - pointsets, fault polygons, export 2d seismic, SDE features



OPAA Versions



OPAA Version	Added Functionality	Petrel Version	OpenSpirit Version
2009	Original functionality	2009.2	v 3.1.4 or higher
2009 SP2	New OpenSpirit Data Manager Dialog to manage exporting and refreshing many objects at a time	2009.2	v 3.1.4 or higher
2010	Send/receive GIS events with all fields and basic display properties	2009.2 2010.1	v 3.2.1 or higher
2010 SP1	OpenSpirit Data Manager enhanced to refresh objects and link (re-link) to external project(s), many performance enhancements for large projects	2009.2 2010.1 2010.2 ?	v 3.2.1 or higher



Live Demo

right
from the **start**



 **OpenSpirit**

OPAA 2010 SP1 – releasing 9/31/2010



- Performance enhancements
 - Option to delay rebuilding object index until OpenSpirit connection made
 - Object index generation sped up by factor of 2-3
- Added export of 2d seismic horizons
- OpenSpirit Data Manager
 - Refresh objects with datakeys to get extended and updated attributes
 - Link to external project based on matching attributes
 - Export all or selected objects by type
 - Option to remove invalid datakeys
- Bug fixes.....

Summary



- OPAA allows users to readily access data from any OpenSpirit connected data store
- OPAA allows users to share interaction events with other OpenSpirit-enabled desktop and Web-based applications
- Improved data management and spatial data integrity is automatic
- OPAA 2010 (and SP1) enhancements:
 - Enhanced GIS events and workflows
 - Enhanced OpenSpirit Data Manager functionality (e.g. assist OW R5000 migration)
 - Enhanced performance for large projects





Clay Harter
clay.harter@openspirit.com
+1 281 295 1400



OpenSpirit **right**
from the **start**