



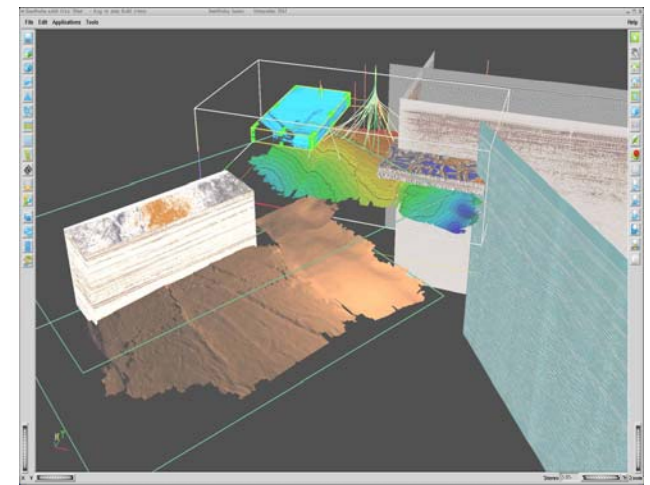
PowerExplorer: Leveraging OpenSpirit Connectivity



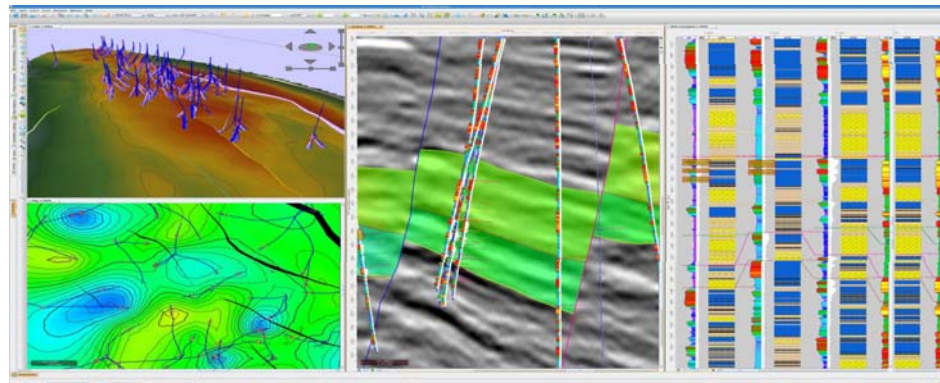
Duane Moonsammy
Landmark Software & Services
OpenSpirit Technical Symposium Houston –
September 2010



- For over 25 years Landmark has been an industry leader in information technology to help replace and produce reserves faster and more efficiently
- More than 350 patent filings since 2001
- Technology breadth:
 - Geological & Geophysical Technology
 - Drilling and Completions
 - Reservoir & Production Technology
 - Data Management

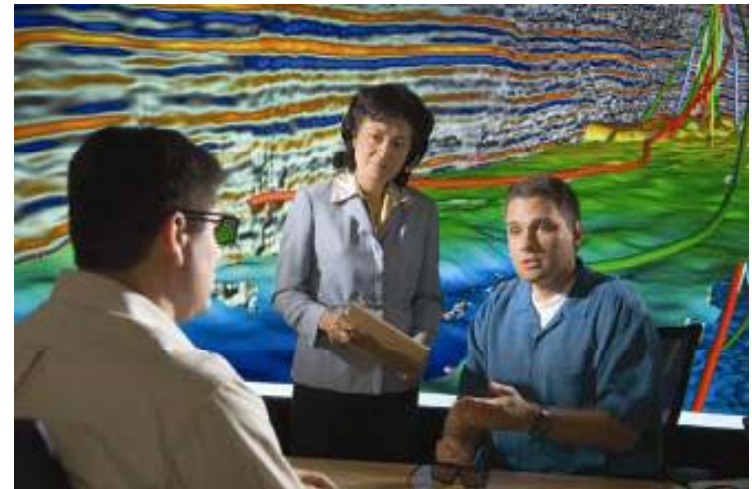


- Introduced DecisionSpace®: A step-change in cross-discipline workflow integration
- An open environment that enables more efficient E&P workflows through the integration of customers' preferred applications and data within and across domains, from any vendor.



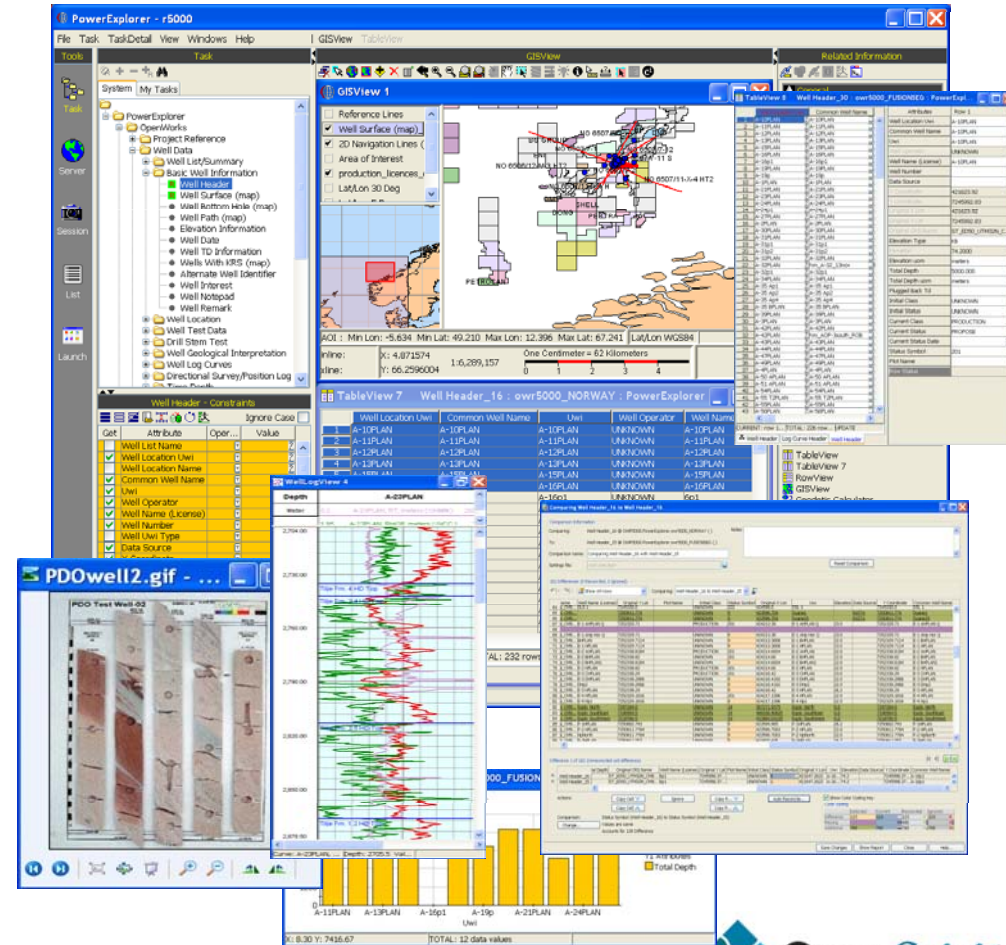
End-User Business Challenges

- Data managers need an efficient way to keep up with geosciences requirements for high data quality across multiple data stores.
- Interpreters want confidence and trust in the data they use.

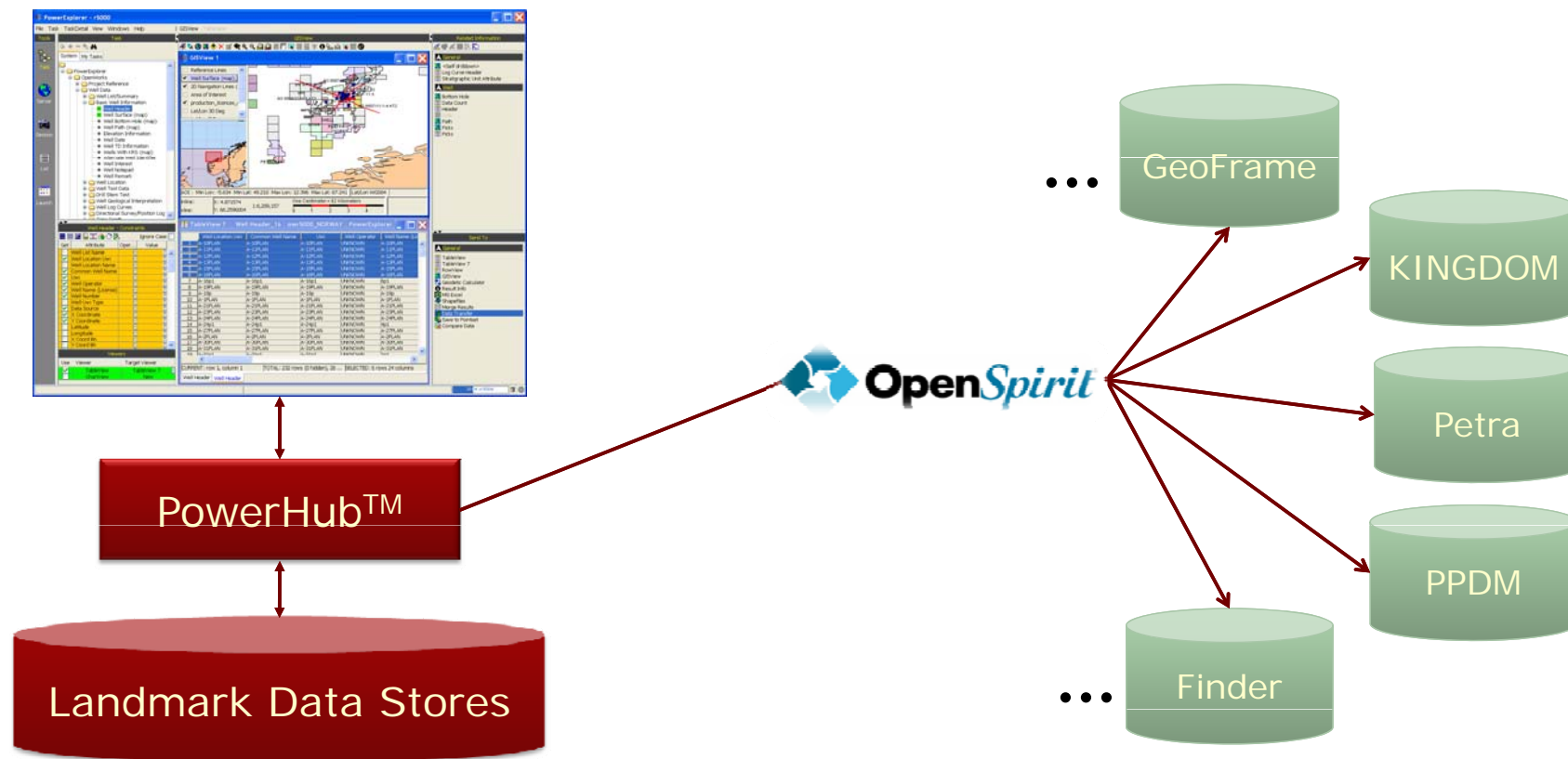


Business Challenge Solution

- The OpenSpirit Connect module enables **PowerExplorer** to access all data available through **OpenSpirit**.
- **PowerExplorer** provides a robust interface for data managers and end users
 - Manipulate, compare and visually integrate data from multiple sources via a variety of data-type specific viewers



Solution Architecture



Workflow movie

HALLIBURTON

Landmark Software
& Services

PowerExplorer - r6000

Comparing Elevation_information_1 to Elevation_information_2

Comparison Information

Comparing: Elevation_information_1

To: Elevation_information_2

Comparison name: Compare Elevation_information_1 to Elevation_information_2

Settings file: <not saved>

Notes

Differences

Show All rows

	Uwi	Elevation Value	Elevation Reference	Data Source	Rig Seq No	Common Well Name
2	427134006200	0.0	NA	KAD	2	N PADRE ISL A-10 JA #1D
3	ASCII_00002	100.0	KB	MMS	4	W2
4	ASCII_00003	90.0	KB	PRJ	5	W3
5	ASCII_00005	90.0	KB	MMS	7	W5
6	ASCII_00006	30.0	KB	LGC	8	W6
7	ASCII_00007	20.0	KB		9	W7
8	ASCII_00008	10.0	KB	KAD	10	W8
9	ASCII_00009	5.0	KB	MMS	11	W9
10	ASCII_00001	249.99998	KB	MMS	3	W1
11	ASCII_00004	50.0	KB	MMS	6	W4
12						
13						
14						

Reconciliation Panel

	Uwi	Elevation Value	Elevation Reference	Data Source	Rig Seq No	Common Well Name	
✖	Elevation_information_1	ASCII_00003	90.0	KB	PRJ	5	W3
✖	Elevation_information_2	ASCII_00003	85.0	KB	PRJ	9	W3

Actions:

Copy Cell | Ignore | Copy Row | Auto Reconcile... | Show Color Coding Key:

	Detected	Current	Reconciled	Ignored
Difference	11	12	13	14
Missing	31	32	33	34
Additional	21	22	23	24

Comparison: Data Source (Elevation_information_1) to Data Source (Elevation_information_2)

Change... Value is same Accounts for 1 Difference

Save Changes | Show Report | Help...

End-User and Solution Benefits

- **Time savings with specialized tools:** Known workflows and tools; including table and map views and flexible comparison tools.
- **Preserves data integrity:** Solution uses Landmark and OpenSpirit software development kits.
- **No learning curve for users of PowerExplorer:** a tool used by many data management professionals.

Summary

HALLIBURTON

Landmark Software
& Services

- **Challenge:** Data managers need an efficient way to manage all their data.
- **Solution:** PowerExplorer with OpenSpirit connectivity provides a reliable way for data managers to be successful.
- **Benefit:** Data managers can save time by visualizing data from multiple data sources, comparing it, identifying the differences and reconciling.



HALLIBURTON

Landmark Software
& Services

Duane Moonsammy
dmonsammy@lgc.com
+1 713 839 3604



OpenSpirit **right**
from the **start**