



The Source  
for Critical Information and Insight™

## PETRA OpenSpirit Application Adapter



Kent Williamson, IHS  
OpenSpirit Technical Symposium  
Houston – September 2010





- IHS Company Overview
- End-User Business Challenges: Data Integration Between PETRA and Other Applications and Databases
- End-User Business Challenge Solution: PETRA OpenSpirit Application Adapter
- PETRA OpenSpirit Application Adapter Demo
- PETRA OpenSpirit Application Adapter Key Benefits
- Summary & Contact Information

# IHS Overview



The Source  
for Critical Information and Insight™

- Incorporated in 1959, public in 2005
- \$1+ Billion Revenues, 4,300+ employees, global reach
- Leading source of information and expert analysis in pivotal areas shaping today's global businesses
  - Energy, Economics, Geopolitical Risk, Sustainability and Design & Supply Chain Management
- Energy heritage – PI/Dwights, Petroconsultants, CERA
- PETRA acquired in 2006
  - General purpose geology and engineering interpretation tool
  - Strong growth, extensive use from majors to consultants

# End-User Business Challenges



The Source  
for Critical Information and Insight™

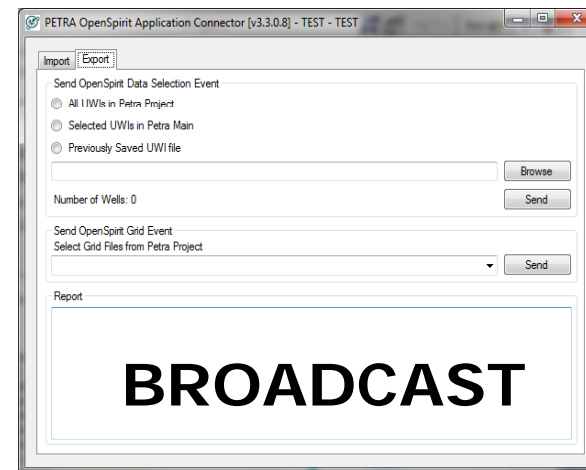
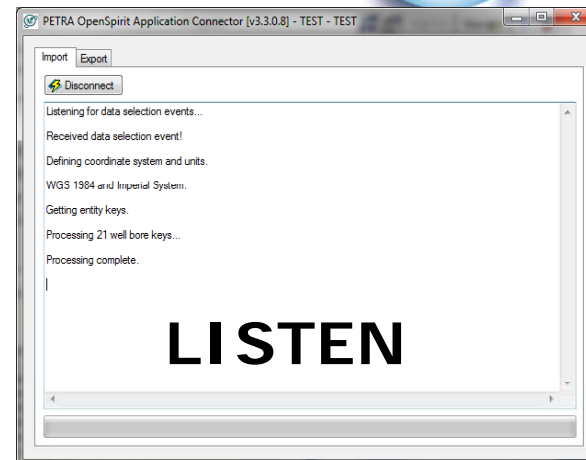
- PETRA: built for interpreters
  - Open to most data, holds and generates large amounts
- Other applications and databases
  - Seismic, simulators, GIS, corporate datastores
- Interpreter/technician personas
  - Easily move data between apps for better interpretation
  - Build better projects with “best” data
- Application support/data management personas
  - Harvest and store “best data”
  - Facilitate collaboration with more integration

# Business Challenge Solution



The Source  
for Critical Information and Insight™

- PETRA OpenSpirit Application Adapter (initial release)
  - Listen (import) – well, logs, picks (tops), dir surveys
  - Broadcast (export) – well keys, grid events
- Future development
  - OpenSpirit PETRA Data Connector improvements
  - Grid & GIS events, match and merge etc. TBD



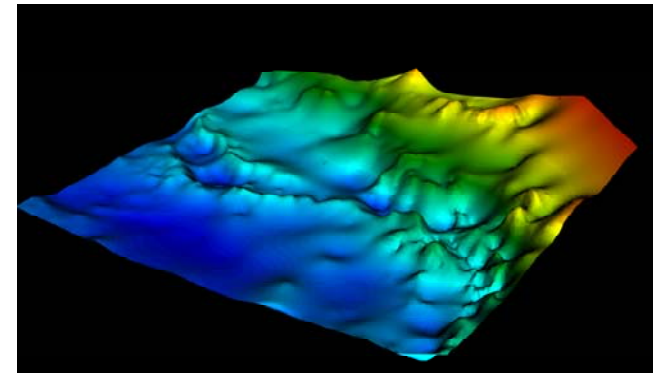
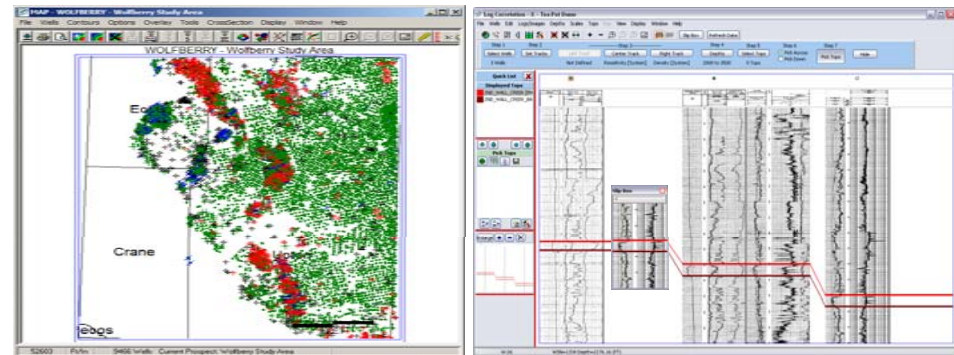
# Business Challenge Solution



The Source  
for Critical Information and Insight™

- PETRA OpenSpirit Application Adapter Workflows

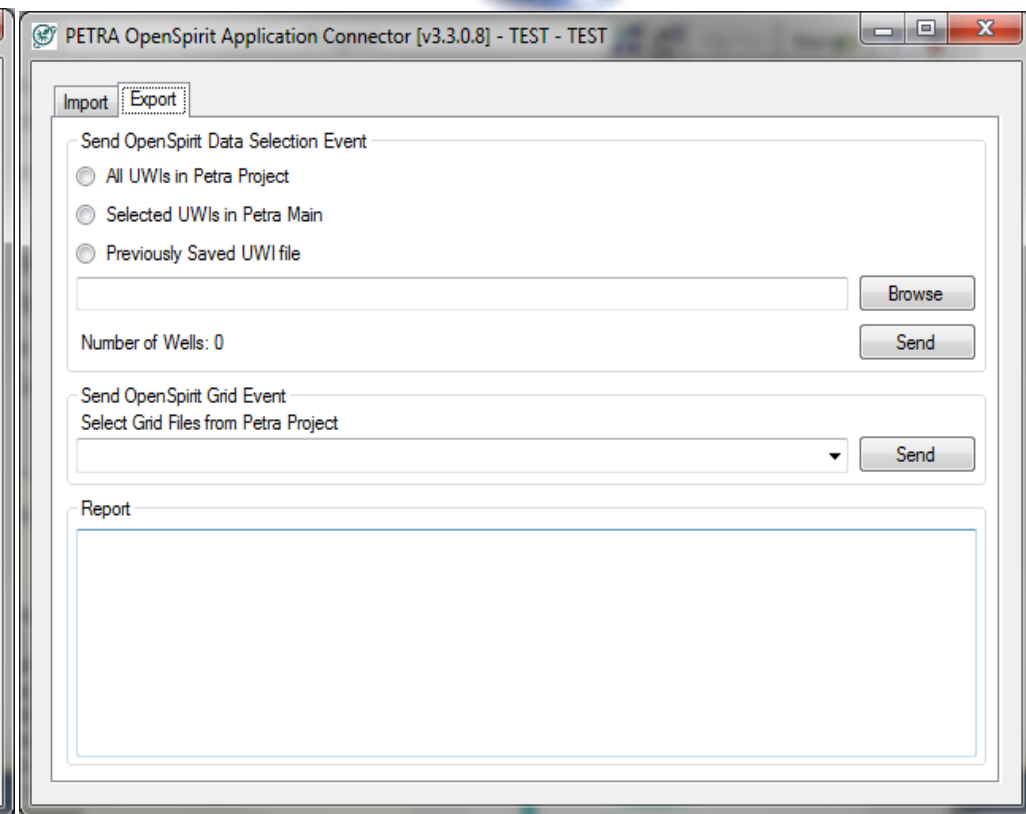
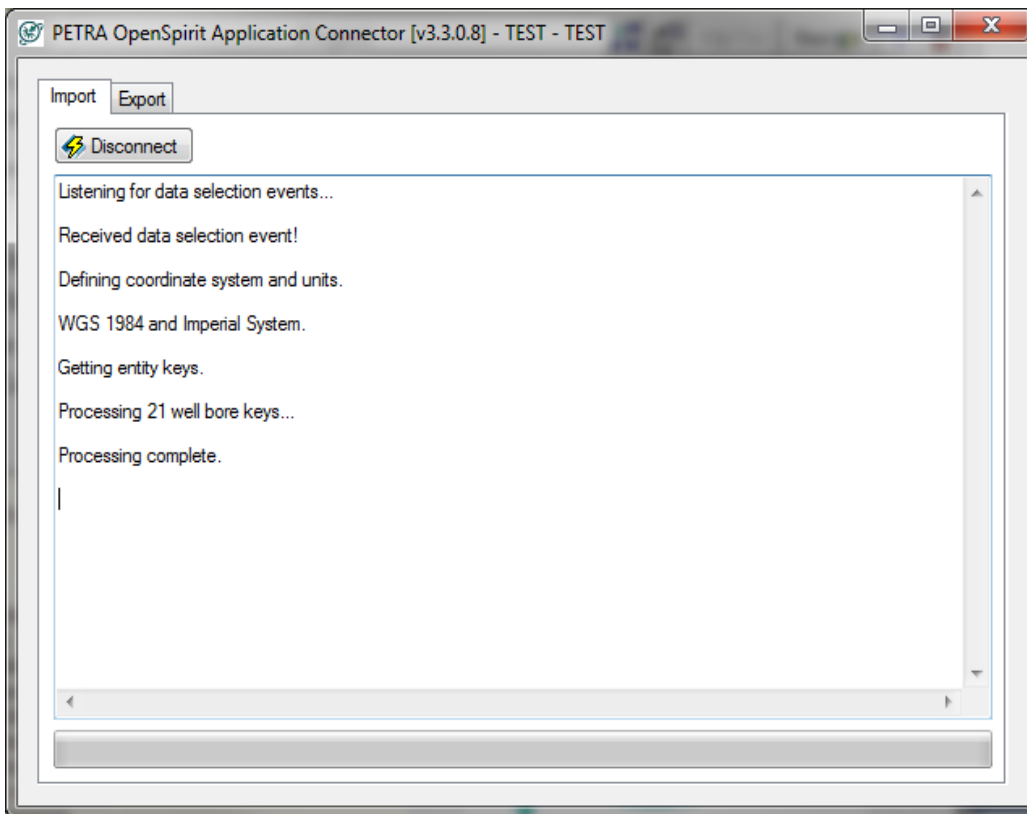
- Bring needed well, related data into PETRA from other apps
- Send grid events to simulators & GIS



# Application Adapter Demo



The Source  
for Critical Information and Insight™



# End-User and Solution Benefits



The Source  
for Critical Information and Insight™

- Streamline collaboration between various interpretation tools and disciplines
- Improve currency of projects and datastores
- Well data into PETRA for analysis and interpretation
- Broadcast wells of interest from PETRA to other tools
- Broadcast interpreted surfaces (grids) into other tools such as modeling and simulation packages
- Broadcast grids to GIS packages for final mapping
- IHS-OpenSpirit collaboration will continue – improve Application Adapter AND Data Connector

# Summary



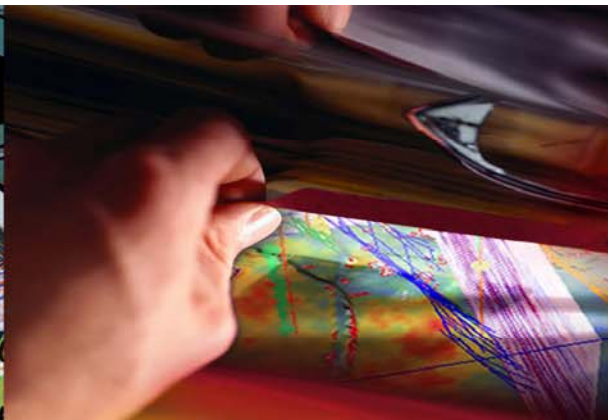
The Source  
for Critical Information and Insight™

- Challenge: Data Integration Between PETRA and Other Applications and Databases
- Solution: PETRA OpenSpirit Application Adapter
- Benefits:
  - Streamline collaboration between various interpretation tools and disciplines
  - IHS-OpenSpirit collaboration will continue – improve Application Adapter AND Data Connector



The Source  
for Critical Information and Insight™

Kent Williamson  
[kent.williamson@ihs.com](mailto:kent.williamson@ihs.com)  
+1 918 971 7071 x222



OpenSpirit  
right  
from the start