



## I Do! Celebrating the Marriage of Wellbore Data in iPoint (Ceremony by OpenSpirit)



Stuart Thomson, Lead Software Engineer  
Perigon Solutions  
OpenSpirit Technical Symposium Houston – September 2010



# About Perigon Solutions



- Wellbore data management, visualization & integration
- Software Engineering & Delivery Team : **iPoint**
- Services Delivery Team :
  - Data QC & Standardization
  - Data Identification, Collation & Loading
  - DB clean-up
  - Core Data integration
- **iPoint:**
  - Data Management Modules
  - On-depth Visualization Modules
  - Database inc raster storage
  - Openspirit Enablement

# End-User Business Challenges

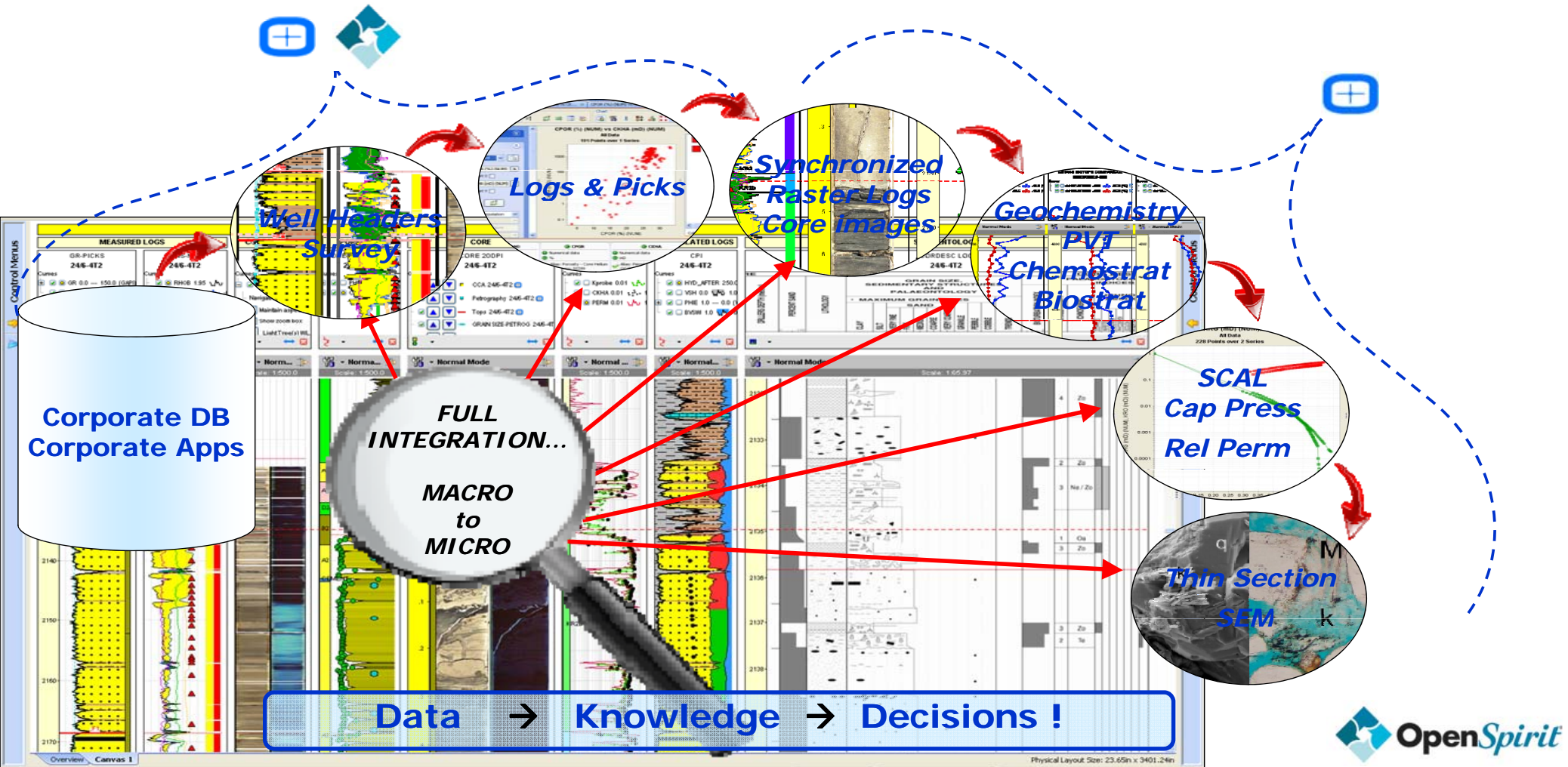
- 'Base' well data (e.g. logs & picks) is available.....but lies in various locations.....but what does it look like?.....and what should be used?
- Complex data types (core, scal, geochem, pvt etc) are not available for seamless integration with the rest of the well data.
- To achieve greater insight and understanding of the reservoir, the cross-referencing of ALL available well data is required, from macro to micro scale.
- A datastore for complex data (tabular & raster) is required with a rich visualization on top ..and fully integrated with other corporate data!

**iPoint**

# Business Challenge Solution



- The data accessibility 'challenge' has been overcome quickly by fully embracing Openspirit enablement.
- The data integration 'challenge' has been overcome by iPoint through the provision of both a data store for complex data types + uniquely powerful co-visualization modules.
- **This advanced and seamless integration has enabled Perigon to create a powerful, yet very accessible, data analysis and visualization experience for both GGRED end-users & Data Managers**



**1 Openspirit 'DynaTree' Menu**  
 Live db connection.  
 Openspirit meta data available in menu nodes

**2 Data Matrix Views**  
 High-level view of data availability & quality.  
 Generated directly on corporate datastores via OSP

**3 Multi-Log List via OSP**  
 Units, Coverage, Num Samples, QC Score.....send from here directly to other applications/data stores etc

**iMine**  
 What data do I have?  
 Where is it?  
 What does it look like?

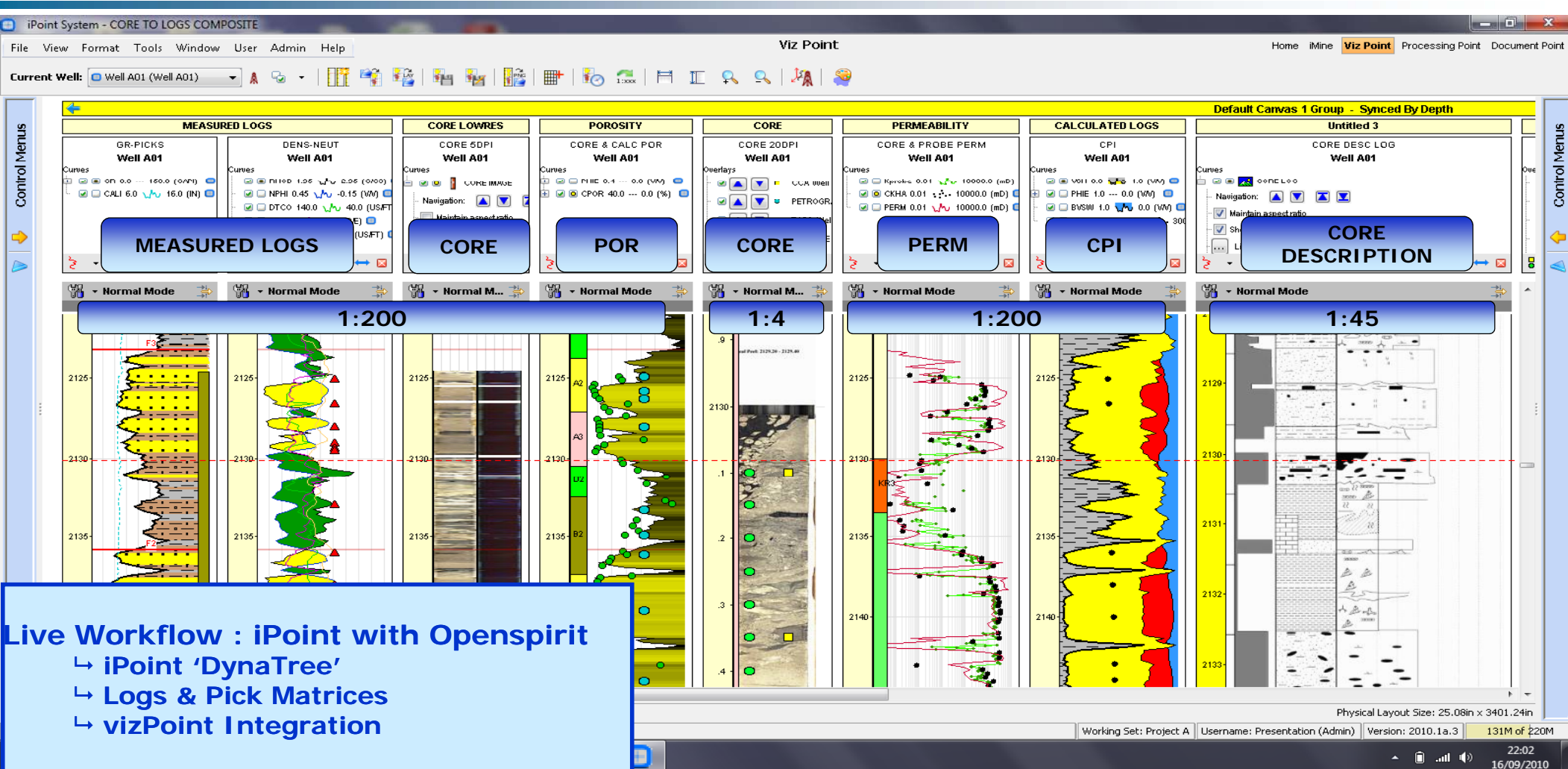
**Optimized Integration**  
 ↳ Cycle Time Reduction  
 ↳ Error Avoidance  
 ↳ Knowledge Capture

**General Information:**  
 Project: OpenSpirit Session  
 Well: 11-MX-10  
 Group: OpenSpirit Logs  
 Name: OpenWorks\_2003\_NPHI  
 Header Score: 93.8%  
 Value Score: QC Check on Values 100%  
 100% of QC Settings Set  
 Dataset Status: None

**5 Curve Preview**  
 Simple depth-based preview  
 Multi-curve, Multi-well

**4 Data Explorer**  
 View actual curve values and QC Scores

# Live Workflow Example



# End-User and Solution Benefits



- True integration of corporate and complex vendor data.
- Single interface for data access and visualization across geoscience data types & disciplines, saving vast amounts of time.
- Improved decision making through direct multi-sourced data comparisons.
- Rapid turnaround of corporate datastore standardization tasks.
- Allows for full use of expensive-to-acquire, complex data types such as core, scal, geochemistry, PVT etc.

# Summary

- **Challenge**

Geo A... 'I want to access and visualize my wellbore data without unnecessary duplication'

Geo B... 'I just want to quickly & simply find, view, select & get my data out'

Geo C... 'I need to see my corporate base well data alongside all complex analysis for the full picture'

- **Solution = /P<sub>+</sub>oint +  OpenSpirit**

- Perigon Solutions Limited
- [info@perigonsolutions.com](mailto:info@perigonsolutions.com)
- [www.perigonsolutions.com](http://www.perigonsolutions.com)
- +44 (0) 1224 355257



Stuart Thomson  
sthomson@perigonsolutions.com  
+44 (0) 1224 355257

