



KINGDOM Connect: Coexistence in a Multi-Domain World



Kay Sutter, SMT
OpenSpirit Technical Symposium
Houston – September 2010



SMT Overview



- **Established Company:** SMT is the global market share leader for Windows based interpretation
 - In business since 1984 – always profitable
 - In 2,700 companies in over 100 countries
 - Used by 85% of 150 largest E&P companies
 - Used by over 75% of US on-shore unconventional players
- **Technology Focused:** 80% of employees work in technology
 - 33% are Geoscientists
 - 33% of subject matter experts are PhDs
- **Technical Partners:** STS Alliance (JewelSuite, CMG), Microsoft, OpenSpirit, NetApp, Nvidia



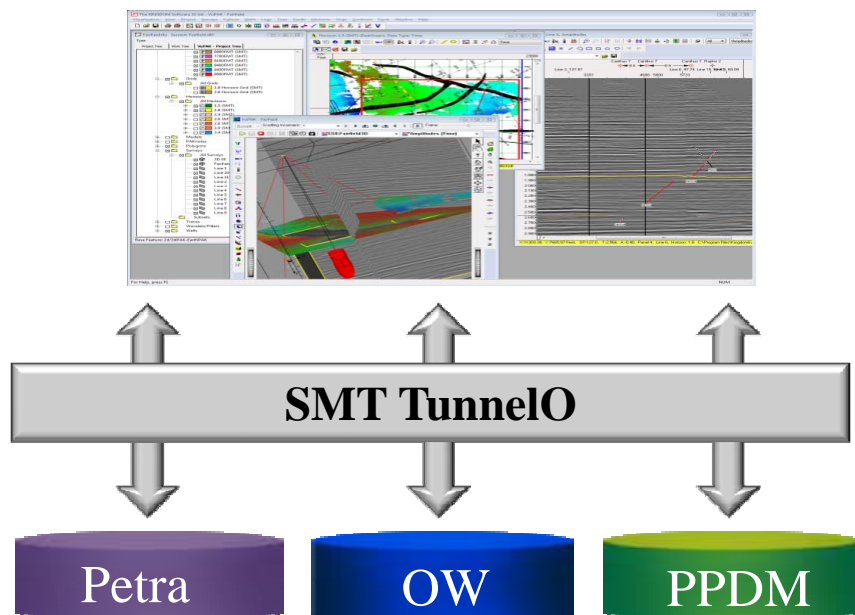
- **Fast Growing:** Now the largest installed base,
 - Continued growth in 2009 when the industry declined
 - International sales 50+% of total – growing faster than domestic

End-User Business Challenge(s)



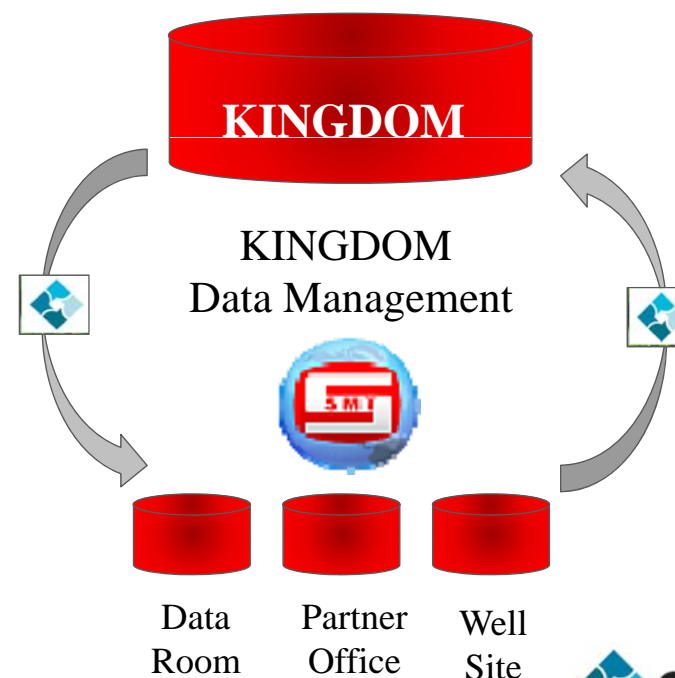
- Every desktop has a nice heterogeneous environment.
- All vendors all have the same data models and are fully integrated.
- Everyone gets paid to spent 20% of their day moving data around.
- It's easy to pick up an interpretation after the geo-tech moves the data from one system to another.
- We all know what the challenges are, but it has taken someone else to be the glue to help resolve them.

Current Business Challenge Solutions



SMT's Tunnel for OpenSpirit, leveraging import/export functions connecting to any OpenSpirit-enabled data store

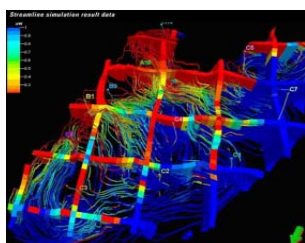
KINGDOM Data Management with OEM CopyManager to streamline data transfer, project cleanup and portability



Current Business Challenge Solutions

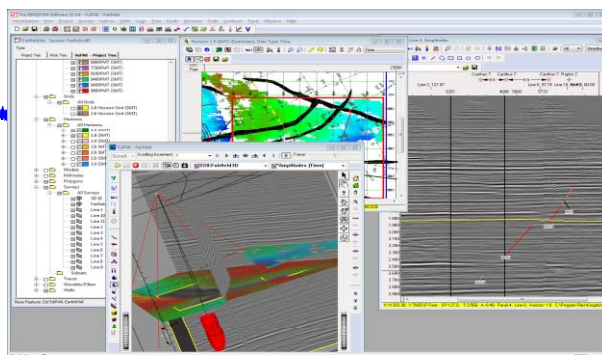


Data Events

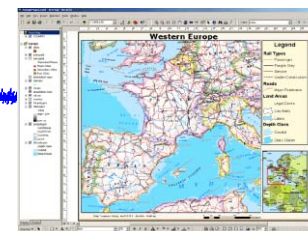


- Wells
- Logs
- Picks
- 3D Seismic
- 2D Seismic
- Horizons
- Faults
- Grids
- Culture
- Cursor

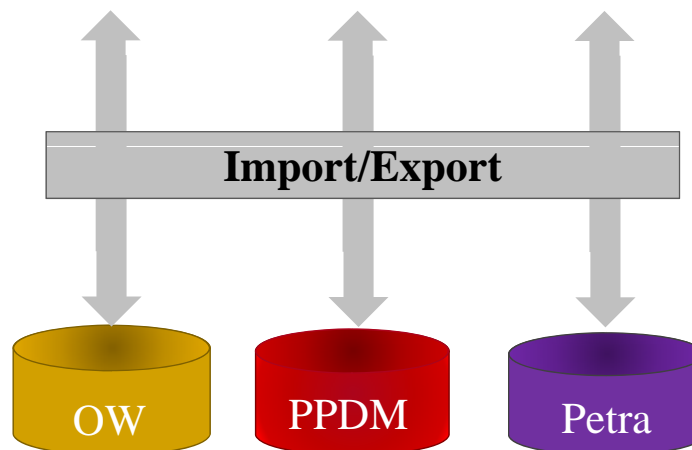
KINGDOM Connect



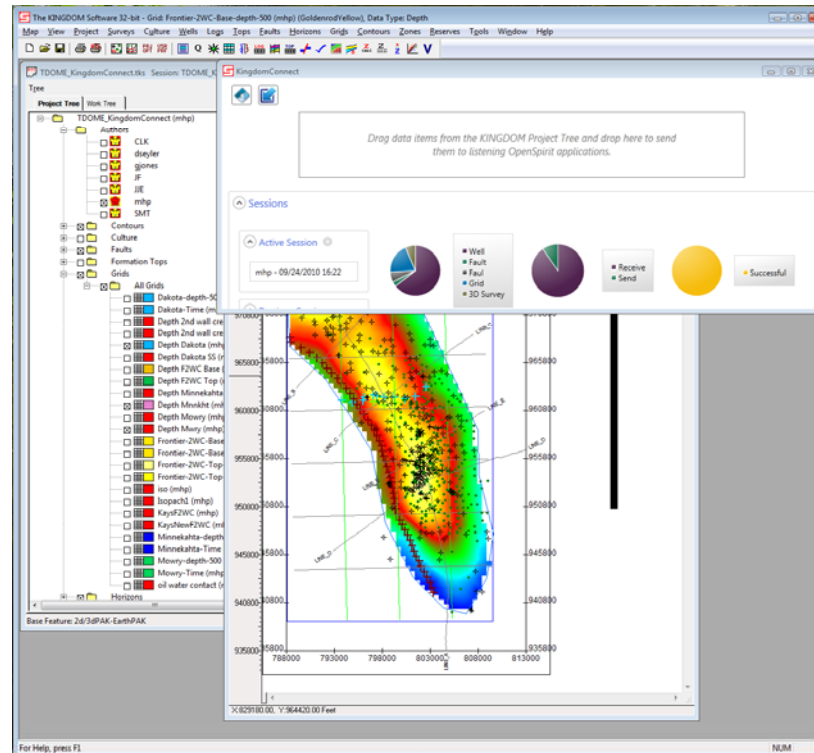
GIS Events



- Wells
- 3D Geometry
- 2D Geometry
- Horizons
- Grids
- Culture
- Cursor



Coming Soon to a Desktop Near You



KINGDOM Connect



- KINGDOM Connect provides simple, multi-vendor co-existence
 - Broadcast data between KINGDOM and any enabled application
 - Refresh data elements from source stores (synchronize)
 - Share cursor tracking events
 - Share GIS Events
 - Track history and status of all data operations

Co-existence in a Multi-Domain World



- We live in the real, multi-vendor, multi-domain world
- KINGDOM Connect leverages OpenSpirit technologies to allow our customers to share data easily between the applications that make them most productive
 - Move data between applications directly within the interpretation workflow
 - Easily update and synchronize information between disparate systems
 - Allows users to focus on finding oil and gas, not exporting data



Kay Sutter
ksutter@seismicmicro.com
+1-713-935-7907



OpenSpirit
right
from the start

<Your Company name>



- Your company overview, (2 slide maximum)
- End-user business challenge(s), (1 slide, bulleted)
- Business Challenge Solution (2 slide maximum, graphics w/ bulleted talking points)
- Demo/pre-recorded movie (Workflow Demo/Movie, target 3 minutes, Intro slide should have a nice screen shot only)
- End-user and solution benefits, (1 slide, bulleted)
- Summary & contact information, (1 slide, Bulleted)