

### FEATURE STORY

## At Least You Can Pick Your Friends

By Dan Piette, OpenSpirit President & CEO



I come from a close family – close enough that if I ended up in jail halfway around the world, I would call any of them.

They would each have a different approach to the problem. One would be on a plane the next day, and work the system to get me out. Another would be on a plane the next day, and by nightfall would be in the cell next to me. Yet another would never leave their house, but pull enough strings so that I would be released and be given both an apology and a first-class ticket home.

I am blessed with my family. I love my family. I don't have a choice – as I said above, they are family. Even though one of them has been married multiple times (sequentially, not simultaneously), some may drink too much and a couple may talk a little too loud. But you learn to get along. They form the basis for your social network. You can count on them unquestioningly.

I also have a small group of friends who are like a “substitute family” – people that I call when I cook too much spaghetti and need someone to come over and help me eat it. And then I have an even larger group of acquaintances that I see less often, but they are usually good for a quick lunch on the weekend. These are folks that enrich the tapestry of my life without being part of the warp or weft of it.

So, what does this have to do with software? In particular, with integration platforms, databases, and upstream oil and gas software? Well, as it turns out, everything.

### What makes a family?

Ours is an industry built upon finding and placing value on a resource that we cannot physically see. All we have is data to define the subsurface and quantify reserves. While seemingly simple, the details and processes are painfully complex.

Have you ever considered...

- How many anchor applications you typically use in order to perform your job?
- How many specialist tools or proprietary algorithms you would like to be able to fit into your workflow but struggle to find an easy way to make that happen?
- How many data sources you need to access in order to feed your applications?
- How often are you faced with the reality that different applications do not readily communicate with each other because they run on different operating systems or are built on different technologies?

*If your family is more like the Corleones than the Cleavers, you sometimes need a little help.*

Big families, like Schlumberger, Landmark, and Paradigm, are dedicated to providing end-to-end solutions, but none can be expected to accommodate 100% of the demand for complex workflows. They have to work together, and with others.

Multi-vendor environments are here to stay, yet fundamental integration challenges still exist in our industry. We at OpenSpirit get asked many times about software environments – like Ocean, DecisionSpace and EPOS – and how we fit into them. These tightly integrated frameworks are like families. They all have great things about them. They, also, all have at least one brother you would rather have stay upstairs when company comes.

That's when you call in the right friends to complement the family dynamic. Flexible

### FEATURE STORY

## You Can Pick Your Friends

v3.1.1 Now Available

Did You Know?

Excuse Our Dust

SHORT SHOTS  
OpenSpirit News

Register for OpenSpirit  
Technical Symposium in Rome



### Infinite Integration

Digital Pathways Delivered

Achieve Exponential Efficiency

Break Free from  
Application Bias

Unravel the Mystery of  
Units & Coordinates

friends that come and go as your circumstances change. We make those friends a lot easier to play with.

### **Managing your extended family**

Integration is not just about the data anymore. It starts with business driven workflows – mixing and matching all of your applications and decisions to achieve a goal. If you want to do nothing more than simply share data – a very basic level of integration – an OpenSpirit-enabled application can do that in its sleep. Like a neighbor that you would ask to pick up your paper and feed your cat when you are on vacation. Useful, necessary, and flexible.

If you want to think bigger, you can blend two applications from different vendors and work with them interactively. Maybe by sharing cursor tracking events, or by sending and receiving data selection events, or even viewing angles and distances. Something that you need in your life on a daily basis – like someone you trust to not only feed your cat when you go out of town, but to monitor your 16-year-old son whom you are leaving alone for the first time.

Consider a workflow using RockDoc (Ikon Science), Petrel (Schlumberger) and Techlog (Techsia). You may be looking at a 3D volume in Petrel. You send a well log or some seismic data to RockDoc, or a well and logs to Techlog. There is no need to worry about copying down coordinates and translating them to another map. You can see the rock physics seismic analysis in RockDoc. One more step, and you can zoom into a detailed well log. You can have a completely scalable picture of your earth model all at the same time.

Check the OpenSpirit functionality matrix to see just how close your friends are. ([www.openspirit.com/MasterApplicationAdapterMatrix5-22-08.pdf](http://www.openspirit.com/MasterApplicationAdapterMatrix5-22-08.pdf))

This is where you really get a big value add by using OpenSpirit. There is nothing else on the market that does what we do in this area. We do not manage the data, nor make the applications that interpret the data. We provide the connectivity environment that drives cross-discipline collaboration. No other software company lets you pick and choose the best of breed – the best of different families – to solve your problems.

If you have ever been on a family vacation, then you recognize the benefit of bringing along a few friends to keep things interesting and smooth out the rough spots. You can't pick your family. Let us help you pick your friends. ◆

## **OpenSpirit v3.1.1 Released May 19**

The latest version of OpenSpirit is now available!

Key enhancements include:

- Addition of new OpenWorks R5000 data connector
- New Recall 5.2 data connector on Linux
- Support for SDE direct connect on Windows

OpenSpirit v3.1.1 is a Master and Satellite release, intended to replace any v3.x release. OpenSpirit v3.1.1 must be installed as a new installation. All platforms are supported.

See a full description at: <http://www.openspirit.com/documentation.html>.

OpenSpirit v3.1.1 Master and Satellite installations are available on all supported platforms.

You can download the v3.1.1 installation kits at: <http://www.openspirit.com/downloads.html>.

**User Name/Password:** openspirit/osplvwle

If you have questions about v3.1.1, please contact us and we'll be happy to assist you. ◆

**Mission Possible**  
Digital Pathways Delivered

**Mission Possible**  
Digital Pathways Delivered

**digital pathways delivered**

**EAGE**  
June 9-12  
Rome  
**Booth 7611**

**Are you Ready?**



**Chris Hixson, Business Development Manager, US & Canada**

Our most recent addition to the sales organization is Chris Hixson, who joined OpenSpirit in mid May. He will be supporting ongoing account management efforts in the US and Canada. In addition to running his own energy brokerage company, Chris has more than 10 years of experience helping oil and gas companies increase productivity, while reducing costs in areas such as logistics, ERP consulting and supply chain management.

He will be working closely with Daryl Bailey, Business Development Manager, US & Latin America.

**You can reach Chris at:**  
+1 281 295 1404  
chris.hixson@openspirit.com

**Nolton Schexnider, Technical Advisor**

Nolton came to OpenSpirit in April by way of Auto-trol Technology, where he served as manager of the SQA team. In his role as Technical Advisor, he will work directly with clients to understand their organizational needs, provide onsite training, recommend solutions, and assist in implementation of OpenSpirit solutions and services. With a focus on software quality and testing, Nolton has 5 years of experience in the oil & gas industry, including assignments at Petris Technology as a Test Engineer and Offshore Test Manager.

He will be working closely with Todd Broussard, Senior Technical Advisor.

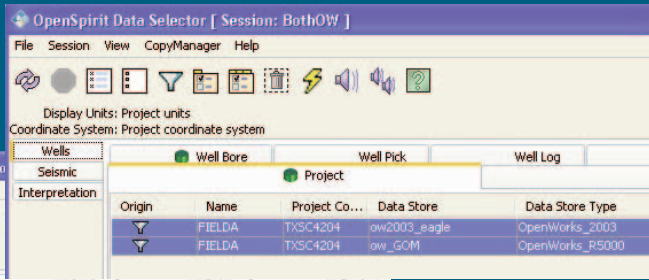
**Contact Nolton at:**  
+1 281 295 1455  
nolton.schexnider@openspirit.com.

continued on page 4

# Did you know...?

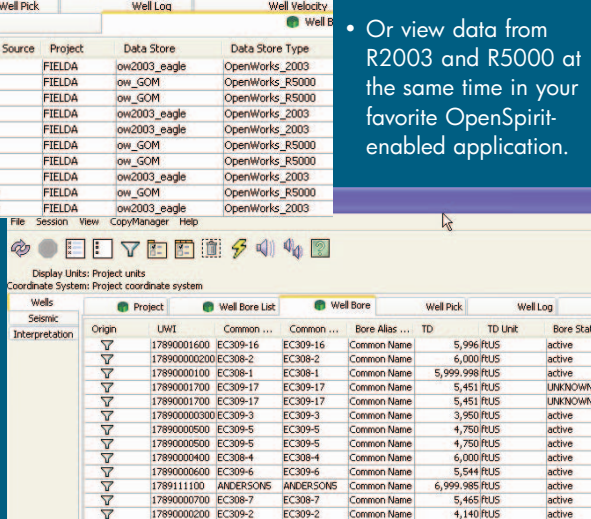
That you can now have *simultaneous* access to data from OpenWorks R2003 and OpenWorks R5000:

- Use the OpenSpirit Data Selector to view and compare data in R2003 and R5000.



- Or view data from R2003 and R5000 at the same time in your favorite OpenSpirit-enabled application.

- Use the CopySync utility to move data bi-directionally between R2003 and R5000.



## Schlumberger has certified Petrel 2008.1 on OpenSpirit v3.1:

- The Petrel 2008.1 data key migration utility allows end users to migrate v2.x to v3.x data keys.
- Write back of 2D seismic interpretation data is now supported.

## OpenSpirit runs on Windows, Solaris and Linux:

- You can run OpenSpirit entirely on Windows. You no longer have a dependency to run the OpenSpirit Master installation on a Solaris or Linux machine.

## More Walls are Tumblin' Down

This time last year the construction of our new office space was in full swing. Today, the expansion of our new office space is in full swing! Wait a minute...didn't we just do this?

Lucky for us our contract included a "kick out the neighbors" clause, because we are knocking down walls to create 12 new offices and get us to about 17,000 square feet. Additionally, we have just completed a full-scale IT upgrade across our entire infrastructure.

We are now at 61 employees and climbing, and your continued support has allowed us to grow our business and enhance our infrastructure to develop and support the solutions you need. We thank you for that.

So, if you hear hammering in the background the next time you call...uh...we're hearing it, too! ◆



# OpenSpirit Technical Symposium Rome

## Register Today!

The **OpenSpirit Technical Symposium** brings together end users and best-of-breed software vendors for an open-forum information exchange featuring technical information and end-user case studies. Attendees return to their organizations with new ideas about how to leverage OpenSpirit technology within their G&G workflows. You will hear plenty of information about:

- OpenSpirit v3.1.1 Update
- Next Generation Petrel Plug-in
- GIS Integration
- LoadIT™ WITSML
- Future OpenSpirit Development Plans

**Friday, June 13 0830 to 1600**  
Radisson SAS Hotel, Rome

Social event will be held on the evening of Thursday, **June 12** at **Gusto Winebar**

The afternoon offers presentations from clients and partners who will discuss their OpenSpirit integration experiences.

### Guest presentations by:

- Landmark
- Perigon Solutions
- Schlumberger
- Shell
- StatoilHydro
- Volantice Solutions

### Register for Rome

[www.openspirit.com](http://www.openspirit.com) or come to Booth 7611 during EAGE

**Several members of our Developer, Support, and Training teams on a field trip to the *Ocean Star Offshore Drilling Rig and Museum in Galveston, Texas.***



Back: Stan Banic, Dorin Tepeneu, Mike Slavin, David Doty, Carl LaSala, Greg Howard, Jay Parsley. Front: Anthony Shiu, Ruby Li, Grant Marblestone, Shu-Jane Chen, John Wilson, Biao Lu, Weijie Zhang.

continued from page 3  
SHORT SHOTS

### Events and Technical Symposia

- EAGE, June 9-12, Booth 7611, Rome
- **OpenSpirit Technical Symposium, June 13, Rome – Register TODAY!**
- **OpenSpirit Technical Symposium, September 3, Calgary**
- **OpenSpirit Technical Symposium, September 10, Houston**
- SEG, Nov. 9-12, Las Vegas, Booth 818
- SMI E&P Information and Data Management Conference, February 10-11, 2009, London

### OpenSpirit Training Dates

Courses are held at our offices in Stafford, Texas.

### OpenSpirit Basics

- August 26
- November 25

### OpenSpirit for Administrators

- August 27
- November 26

Information and registration instructions/form are available at:  
[www.openspirit.com/training.html](http://www.openspirit.com/training.html).

## Have Ideas for the Connection?

Make the  
**OpenSpirit Connection**  
work for you by sending your  
ideas to  
[kathy.ashmore@openspirit.com](mailto:kathy.ashmore@openspirit.com).



OpenSpirit Connection is a quarterly publication of the OpenSpirit Corporation. It is distributed via email and through the corporate Web site: [www.openspirit.com](http://www.openspirit.com)

If you would like to subscribe to OpenSpirit Connection, please send an email with "subscribe" anywhere in the subject or message body to the email address below.

OpenSpirit Corporation, 4800 Sugar Grove Blvd., Suite 500, Stafford, TX 77477, (281) 295-1400

Address all inquiries and subscriptions to:  
[info@openspirit.com](mailto:info@openspirit.com)