



Infinite Integration

Harvesting Information Using OpenSpirit Data Management Workflows

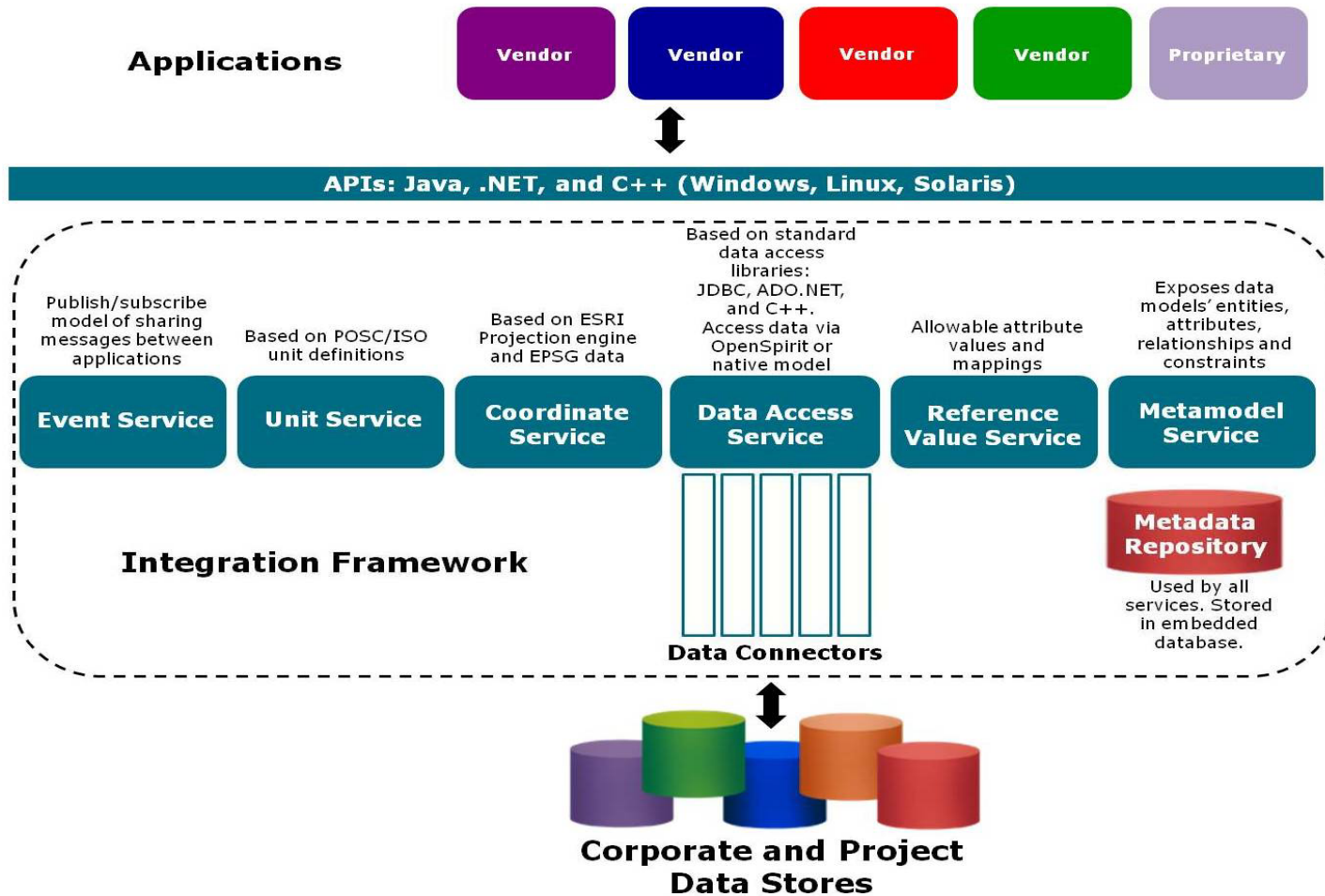
Todd Broussard

Wednesday, February 11, 2009



Service-Oriented Middleware

Service-Oriented Middleware

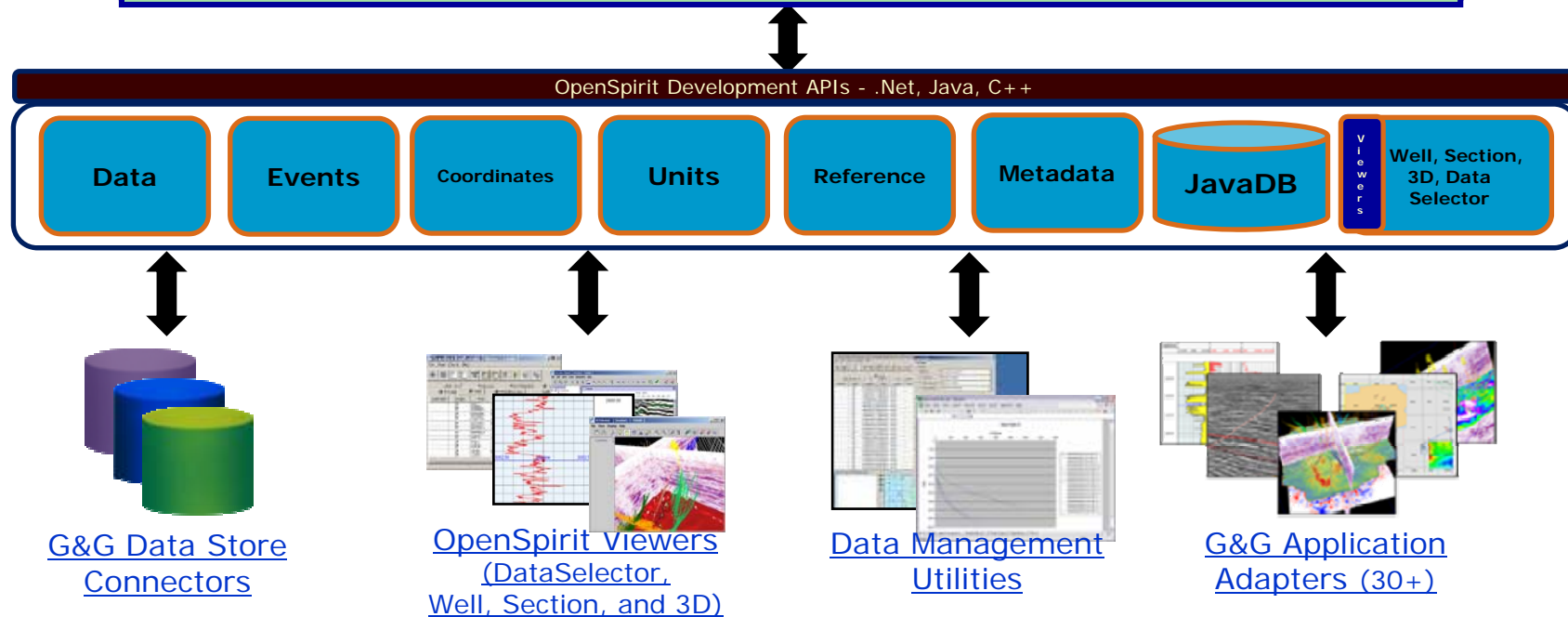
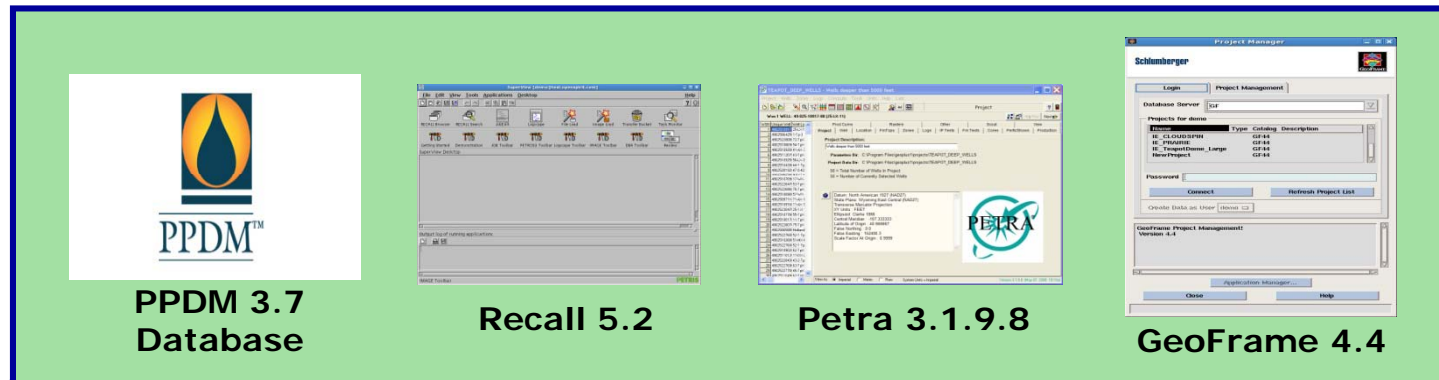


Data Management Challenges

- Project data locked away in multiple data silos and formats
- Diverse IT infrastructure
- Data exists in multiple projections and units
- No common tools to preview and validate data
- Data transfer can be time consuming and error prone



OpenSpirit – Data Management



Workflow objectives

- Assemble new well from multiple data sources
 - Copy well header from PPDM to GeoFrame
 - Copy log curves from Recall to GeoFrame
 - Copy picks from Petra to GeoFrame
- Modify pick value in Petra
 - Use OSP Query to identify modified pick
 - Overwrite pick from Petra to GeoFrame

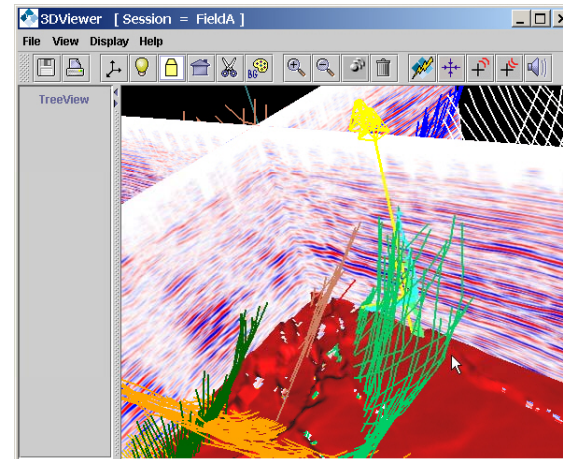


Runtime - Viewers

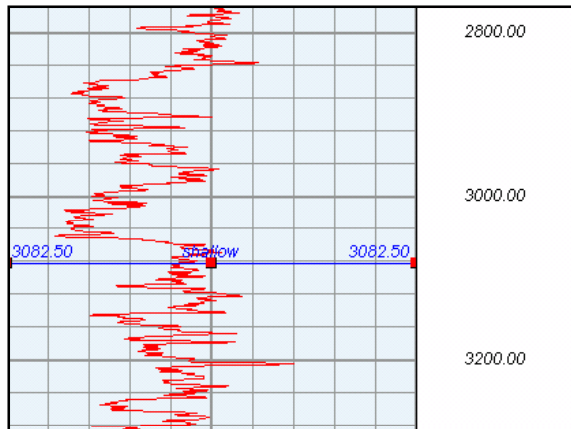
Data Selector

OpenSpirit DataSelector Plus [Session: Clay]				
File View Event CopySync Help				
Display Units: Project units Coordinate System: Project coordinate system				
Wells		Project		
Well Bore		Well Pick		
Interpretation	Origin	UMI	Common Name	TD
Culture				TD Unit
	▼	Caicite-32	Caicite-32	10,249.442 ft
	▼	178900000300	EC308-3	3,950 ftUS
	▼	178900000800	EC308-8	5,450.011 ft
	▼	1789000001900	EC308-19	5,450 ftUS
	▼	Halite-A5	Halite-A5	10,672 ft
	▼	Basalt-B6	Basalt-B6	8,655 ft
	▼	Citrine-1	Citrine-1	12,001 ft
	▼	1789000001...	EC308-10	5,440 ftUS

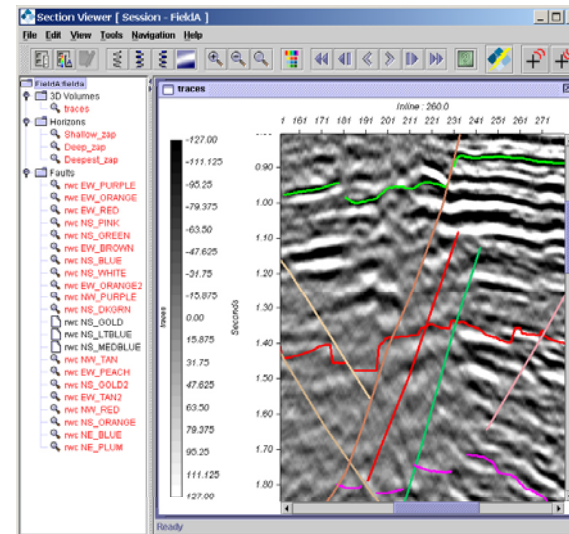
3D Viewer



Well Viewer



Section Viewer

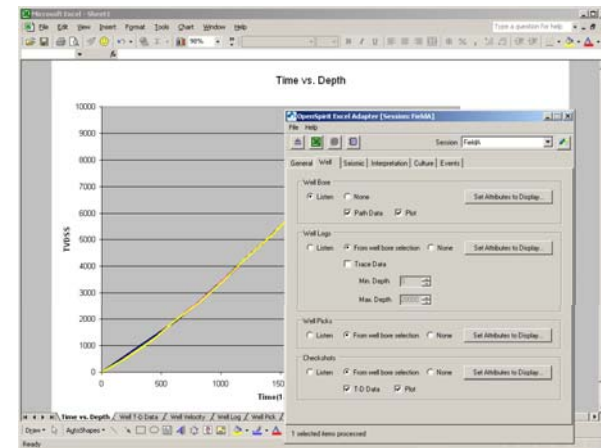
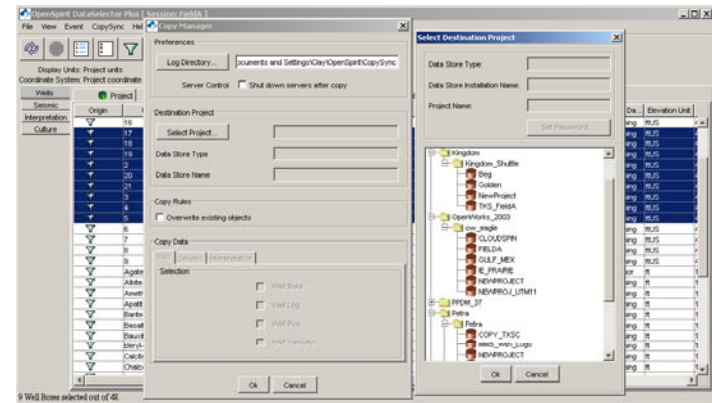


[Return](#)



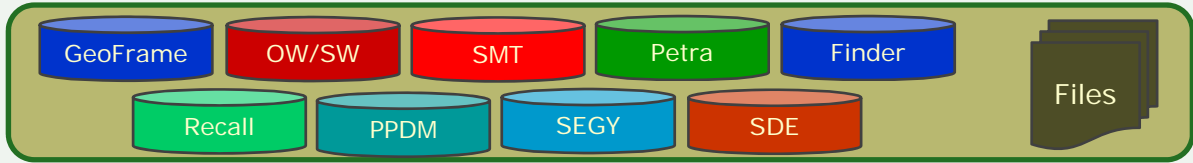
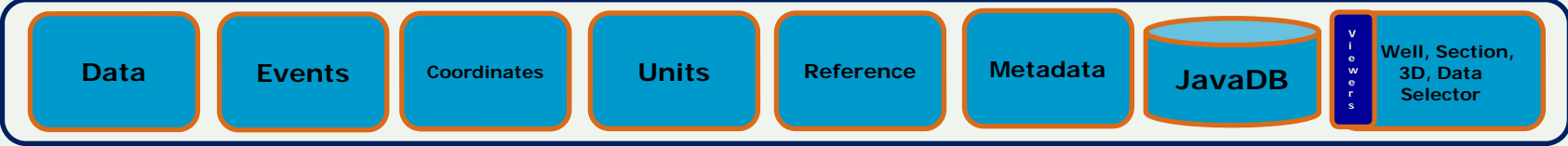
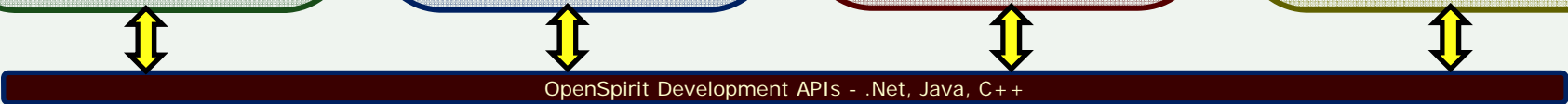
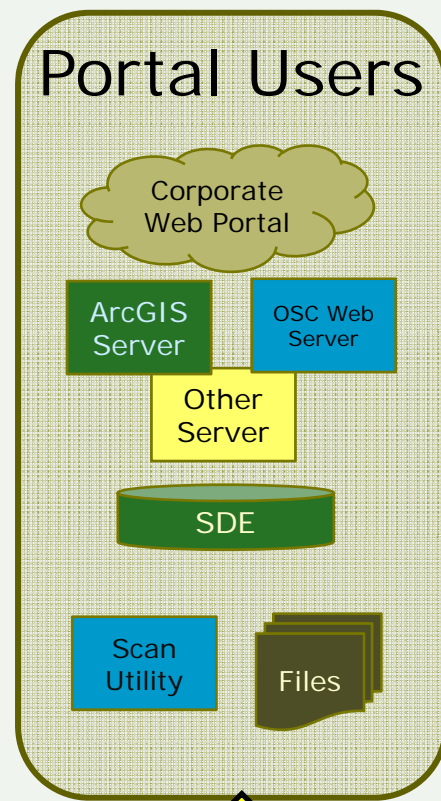
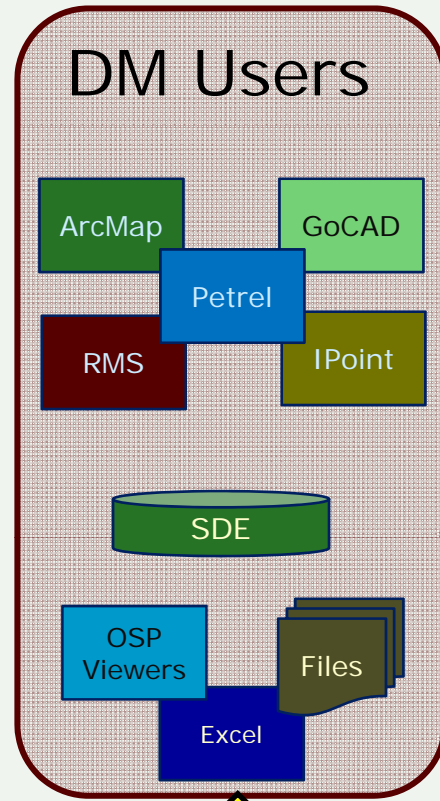
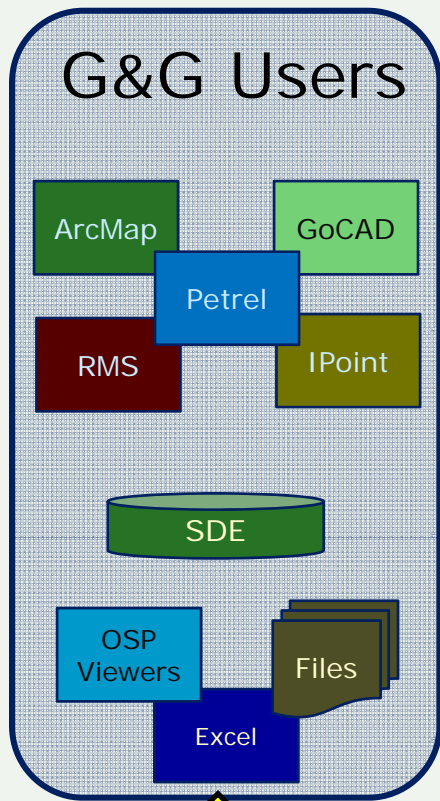
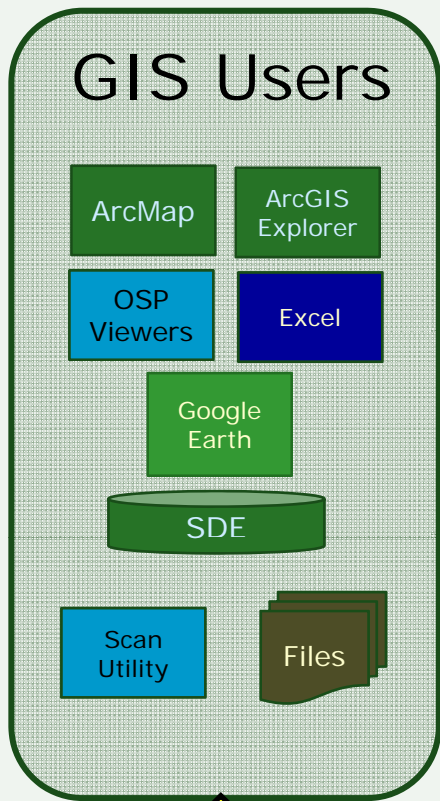
Data Management & GIS Utilities

- **CopyManager:** One-step data transfer, without intermediate files, between any OpenSpirit-enabled data store with automatic coordinate and unit conversion
- **Excel Adapter:** send any OpenSpirit data attributes into Excel for ad-hoc reporting and analysis



[Return](#)





Well Matchings Criteria

Data Store	Well	Well Bore	Well Pick	Well Velocity
GeoFrame	Identifier	Well Identifier	Bore PickName	Bore WellVelocityName
Finder	Identifier	Well Identifier	Bore PickName	Bore WellVelocityName
Kingdom	Identifier	Well Identifier	Bore PickName	Bore WellVelocityName
Petra	Identifier	Well Identifier	Bore PickName	NA
OpenWorks	Identifier	Well Identifier	Bore PickName Interpreter Pick ValueMD	Bore WellVelocityName



Conclusions

Summary

- Used OSP tools to select data from PPDM, Petra, Recall
- Assembled new well in GF by copying from multiple sources
- Imported data into Excel for analysis
- Used filters to locate modified picks and repeat copy to update well in GF

Benefits

- Correct data selected, reviewed and transferred
- Coordinate and units conversion handled automatically
- One step transfer minimizes potential for error



Thank you!

Todd Broussard, Sr. Technical Advisor
+1 281 295 1400
todd.broussard@openspirit.com

