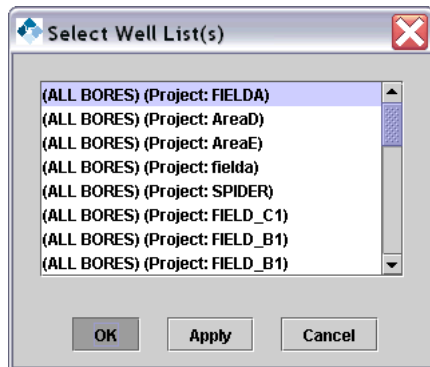
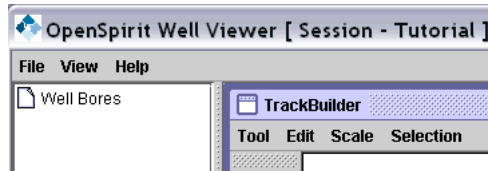


Using the Well Viewer

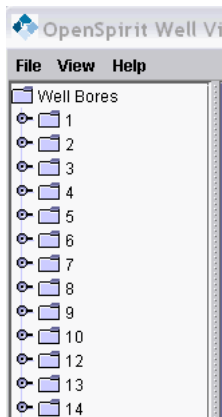
The Well Viewer is a utility that allows users to view selected well logs and well markers in a conventional well track format. The Well Viewer is started from the Tools menu and requires a session to communicate with other applications.

When launched, the Well Viewer shows an empty Well Bore folder. This is a change from previous versions to better accommodate projects with many wells.

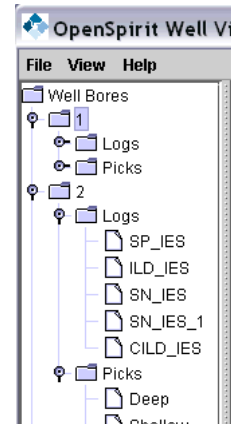


There are two ways to get Well Bores. The first method is to listen for Well Bore selection Events, which can be made from the Tab Selector, 3D Viewer, Arcview Extension, or any native OpenWorks or GeoFrame application via the OpenSpirit Event Gateway.

Or you can select the *File -> Read Bores from Well List(s)* menu item and then select a Well Bore List from the dialog. All well bore lists from the projects in your session will be displayed for you to choose from.



Once you make a selection of the Wells you would like to view, the Well Viewer list shows a listing of the COMMON WELL NAME or the WELL UWI and the associated Logs and Picks. You can drill down into each well and see the Well Logs and Picks within each Well Bore.



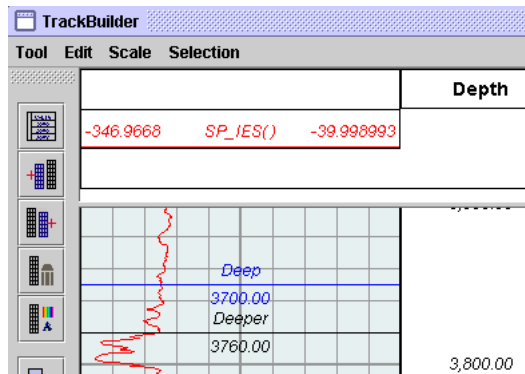
CHAPTER 2 OpenSpirit Tutorial



Usage Note: An artificial wellbore list is always

created for each project called "ALL BORES". This folder contains all wellbores from this project and allows for the selection of wellbores that may not be in any defined wellbore list.

Displaying Logs and Markers

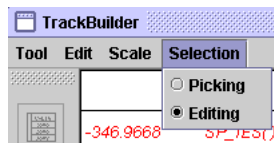


Well Logs and Picks can be *dragged* onto the active track. You can set a track to be active by clicking on it (it is shaded when selected). Any number of logs and markers may be displayed in a single track

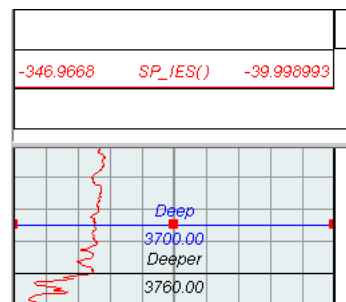
Additional Well Viewer Features

The Well Viewer has additional features such as changing log display properties, depth scales, track display properties, adding/deleting tracks, and removing displayed objects. These features can be selected in the Edit menu or by icons across the top of the well display window.

Editing Markers and Logs




In order to demonstrate how OpenSpirit handles data change events, this viewer allows users to make simple edits to markers (drag a marker up and down) and logs (edit log samples). To enter Edit Mode, select the *Selection > Editing* menu item. Return to normal mode by selecting the *Selection > Picking* menu item.




After entering the *editing* mode, any marker may be selected and it will then be displayed with *handles* that indicate that it may be moved up and down the track.



If a log is selected all its points will be highlighted and individual points may be moved left/right.

Discarding or Committing Data Edits

As markers or logs are being edited, no data changes are stored back to the vendor project(s) unless the commit icon is pressed and you have write access to the associated project. 


If you want to restore the data from the data store and discard any uncommitted data then the reload icon may be pressed. 

Listening for Data Change and Object Selection Events

If the same data object (well log or pick) is displayed in more than one track, or is displayed in another Well Viewer or any other OpenSpirit enabled application using the same session, then these views may all share dynamic data changes (even between applications running on Windows and UNIX). To enable the Well Viewer to listen for data change events and cause it to automatically re-display any changed data, the OpenSpirit logo icon should be pressed. When listening is enabled, a yellow lightening bolt will be displayed. Listening may be toggled on and off by pressing the OpenSpirit logo icon.  Off  On

The lightening bolt also controls the WellViewer's response to relevant Object selection events. If the viewer is enabled for listening and it receives a selection event that contains Well Log or Well Pick selections, the viewer will display the selected objects in the current active track and add, if required, the selected Well Bore List. Note that this allows for the display of objects that may not be in the current ProjectSet (e.g. storeless objects created by other applications that may not be stored in GeoFrame or OpenWorks).

Broadcasting Object Selection Events

An Object Selection event may be sent by highlighting a well pick or log and clicking on the object selection broadcast icon. Sending an object selection event may cause other applications in the same OpenSpirit session to react and display, or otherwise use, this selected object. 

Storing/Restoring Viewer Session Information

When you exit the Well Viewer (*File > Exit*), you are prompted if you wish to store the track layout preferences. If you answer *yes* then the definition of how many tracks and their contents (the logs and picks) are saved. When you run Well Viewer at a later date, with the same OpenSpirit session (on any computer in your site - Windows or UNIX), you are prompted whether you wish to restore the track layout preferences. If you answer *yes* then the same logs and picks are re-displayed in the

CHAPTER 2 OpenSpirit Tutorial

designated tracks. The display colors of the logs and markers are also restored. Note that other display settings (e.g. depth scale) are not currently stored/restored.

Uncommitted Data Changes

Regardless of whether you choose to save the track layout definitions, any unsaved log or pick data edits will be saved in the OpenSpirit object unless you explicitly discard the data edits by restoring from the data store.